

## Elab Fluor® Red 780 Anti-Mouse CD25 Antibody[PC-61.5.3]

Catalog Number: E-AB-F1102US

Note: Centrifuge before opening to ensure complete recovery of vial contents.

### Description

<b>Reactivity</b>	Mouse
<b>Host</b>	Rat
<b>Isotype</b>	Rat IgG1, $\kappa$
<b>Clone No.</b>	PC-61.5.3
<b>Isotype Control</b>	Elab Fluor® Red 780 Rat IgG1, $\kappa$ Isotype Control[HRPN] [Product E-AB-F09823S]
<b>Conjugation</b>	Elab Fluor® Red 780
<b>Conjugation Information</b>	Elab Fluor® Red 780 is designed to be excited by the Red (627-640 nm) laser and detected using an optical filter centered near 770 nm (e.g., a 780/60 nm bandpass filter).
<b>Storage Buffer</b>	Phosphate buffered solution, pH 7.2, containing 0.09% sodium azide and 1% BSA.

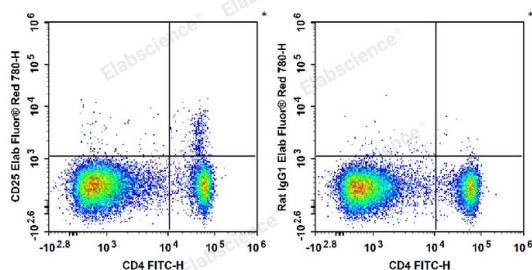
### Applications

### Recommended usage

#### FCM

Each lot of this antibody is quality control tested by flow cytometric analysis. Please check your vial before the experiment. Since applications vary, the appropriate dilutions must be determined for individual use. We suggest each investigator should titrate the reagent to obtain optimal results [The recommended concentration is 0.1-1  $\mu\text{g}/10^6$  cells in 100  $\mu\text{L}$  volume].

### Data



C57BL/6 murine splenocytes are stained with FITC Anti-Mouse CD4 Antibody and Elab Fluor® Red 780 Anti-Mouse CD25 Antibody (Left). Splenocytes are stained with FITC Anti-Mouse CD4 Antibody and Elab Fluor® Red 780 Rat IgG1,  $\kappa$  Isotype Control (Right).

### Preparation & Storage

<b>Storage</b>	Keep as concentrated solution. This product can be stored at 2-8°C for 12 months. Please protected from prolonged exposure to light and do not freeze.
<b>Shipping</b>	Ice bag

### Antigen Information

<b>Alternate Names</b>	IL-2 receptor subunit alpha;IL-2-RA;IL-2R subunit alpha;IL2-RA;IL2RA;Interleukin-2 receptor subunit alpha;TAC antigen;p55
<b>Uniprot ID</b>	P01590

### For Research Use Only

**Gene ID**

16184

**Background**

CD25 is a 55 kD glycoprotein, also known as the low affinity IL-2R $\alpha$ , Ly-43, p55, or Tac. It is expressed on activated T and B cells, thymocyte subset, pre-B cells, and T regulatory cells. In association with CD122 (IL-2R $\beta$ ) and CD132 (common  $\gamma$  chain), CD25 forms the high affinity signaling IL-2 receptor.