

SAE1 Monoclonal Antibody

catalog number: AN200081P

Note: Centrifuge before opening to ensure complete recovery of vial contents.

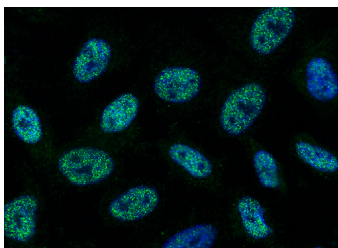
Description

Reactivity	Human
Immunogen	Recombinant Human SAE1 protein
Host	Mouse
Isotype	IgG2b
Clone	2D8
Purification	Protein A
Buffer	0.2 µm filtered solution in PBS

Applications Recommended Dilution

ICC/IF	1:20-1:100
--------	------------

Data



Immunofluorescence analysis of SAE1 in HeLa cells. Cells were fixed with 4% PFA, permeabilized with 0.1% Triton X-100 in PBS, blocked with 10% serum, and incubated with mouse anti-Y SAE1 Monoclonal Antibody (dilution ratio 1:60) at 4°C overnight. Then cells were stained with the Alexa Fluor®488-conjugated Goat Anti-mouse IgG secondary antibody (green) and counterstained with DAPI for nuclear staining (blue). Positive staining was localized to Nucleus.

Preparation & Storage

Storage	This antibody can be stored at 2°C-8°C for one month without detectable loss of activity. Antibody products are stable for twelve months from date of receipt when stored at -20°C to -80°C. Preservative-Free. Avoid repeated freeze-thaw cycles.
Shipping	Ice bag

Background

SAE1 belongs to the ubiquitin-activating E1 family. It is a heterodimer that acts as a E1 ligase for SUMO1, SUMO2, SUMO3, and probably SUMO4. It functions as a UBL1 E1 ligase mediating the ATP-dependent activation of UBL1. SAE1 binds with UBL1A and UBL1B to form a heterodimer which can bind UBL1. SAE1 also regulates ATP-dependent activation of SUMO proteins and formation of a thioester with a conserved cysteine residue on SAE2. SAE1 and UBA2 form a heterodimer that functions as a SUMO-activating enzyme for the sumoylation of proteins.

For Research Use Only