

MCAM Polyclonal Antibody

catalog number: E-AB-53284

Note: Centrifuge before opening to ensure complete recovery of vial contents.

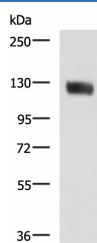
Description

Reactivity	Human
Immunogen	Synthetic peptide of human MCAM
Host	Rabbit
Isotype	IgG
Purification	Antigen affinity purification
Conjugation	Unconjugated
buffer	Phosphate buffered solution, pH 7.4, containing 0.05% stabilizer and 50% glycerol.

Applications

Applications	Recommended Dilution
WB	1:500-1:2000
IHC	1:40-1:200

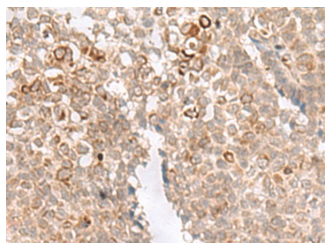
Data



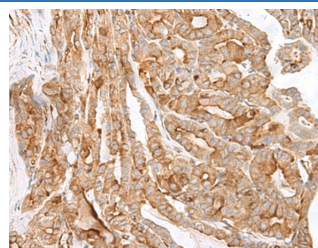
Western blot analysis of Human leiomyosarcoma tissue lysate using MCAM Polyclonal Antibody at dilution of 1:400

Observed-MV: Refer to figures

Calculated-MV: 72 kDa



Immunohistochemistry of paraffin-embedded Human ovarian cancer tissue using MCAM Polyclonal Antibody at dilution of 1:40 (x200)



Immunohistochemistry of paraffin-embedded Human thyroid cancer tissue using MCAM Polyclonal Antibody at dilution of 1:40 (x200)

Preparation & Storage

Storage	Store at -20°C Valid for 12 months. Avoid freeze / thaw cycles.
Shipping	The product is shipped with ice pack, upon receipt, store it immediately at the temperature recommended.

Background

CD146, also known as melanoma cell adhesion molecule (MCAM) or MUC18, originally identified as a biomarker of melanoma progression, is a transmembrane glycoprotein belonging to the immunoglobulin (Ig) superfamily. Structurally, it consists of five Ig domains, a transmembrane domain, and a cytoplasmic region. In normal adult tissue, CD146 is primarily expressed by vascular endothelium and smooth muscle. CD146 is a key cell adhesion protein in vascular endothelial cell activity and angiogenesis, and has been used as marker of circulating endothelium cells (CECs).

For Research Use Only