

Recombinant Human Kallikrein 6/KLK6 Protein (His tag)



Catalog Number:PDEH100302

Note: Centrifuge before opening to ensure complete recovery of vial contents.

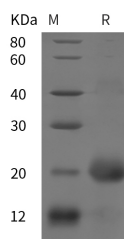
Description

Synonyms	Kallikrein-6;Neurosin;Protease M;SP59;Serine Protease 18;Serine Protease 9;KLK6;PRSS18;PRSS9
Species	Human
Expression Host	E.coli
Sequence	Glu 81-Lys 244
Accession	Q92876
Calculated Molecular Weight	25.8 kDa
Observed molecular weight	20 kDa
Tag	N-His

Properties

Purity	> 95 % as determined by reducing SDS-PAGE.
Endotoxin	Please contact us for more information.
Storage	Generally, lyophilized proteins are stable for up to 12 months when stored at -20 to -80°C. Reconstituted protein solution can be stored at 4-8°C for 2-7 days. Aliquots of reconstituted samples are stable at < -20°C for 3 months.
Shipping	This product is provided as lyophilized powder which is shipped with ice packs.
Formulation	Lyophilized from sterile PBS, pH 7.4. Normally 5 % - 8 % trehalose, mannitol and 0.01 % Tween80 are added as protectants before lyophilization. Please refer to the specific buffer information in the printed manual.
Reconstitution	Please refer to the printed manual for detailed information.

Data



> 95 % as determined by reducing SDS-PAGE.

Background

Tissue kallikreins are a family of extracellular serine proteases consisting of 15 members . The genes of this family aligned in tandem on chromosome 19q13.4 represent the largest contiguous group of proteases within the human genome. Tissue kallikreins have attracted great interest as potential biomarkers for various cancers, including prostate, ovarian, breast, testicular, and lung (2, 3). Human Kallikrein 6 (hKLK6) is a member of tissue kallikrein family observed in breast and brain tissues, colon carcinoma cells, and oligodendrocytes.

For Research Use Only

A Reliable Research Partner in Life Science and Medicine

Toll-free: 1-888-852-8623

Web: www.elabscience.com

Tel: 1-832-243-6086

Email: techsupport@elabscience.com

Fax: 1-832-243-6017