

NCR1 Polyclonal Antibody

Catalog Number: E-AB-13121



Note: Centrifuge before opening to ensure complete recovery of vial contents.

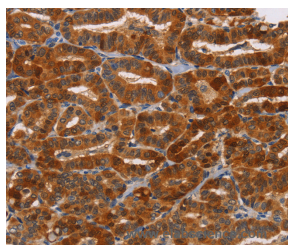
Description

Reactivity	Human
Immunogen	Synthetic peptide of human NCR1
Host	Rabbit
Isotype	IgG
Purification	Affinity purification
Conjugation	Unconjugated
Formulation	PBS with 0.05% sodium azide and 50% glycerol, PH7.4

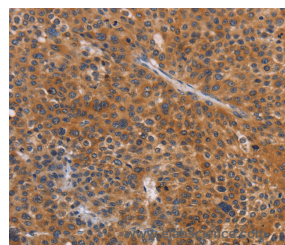
Applications Recommended Dilution

IHC	1:50-1:200
------------	------------

Data



Immunohistochemistry of paraffin-embedded Human thyroid cancer tissue using NCR1 Polyclonal Antibody at dilution 1:30



Immunohistochemistry of paraffin-embedded Human liver cancer tissue using NCR1 Polyclonal Antibody at dilution 1:30

Preparation & Storage

Storage Store at -20°C. Avoid freeze / thaw cycles.

Background

Natural cytotoxicity triggering receptor 1 is a protein that in humans is encoded by the NCR1 gene. NCR1 has also been designated as CD335 (cluster of differentiation 335). Cytotoxicity-activating receptor that may contribute to the increased efficiency of activated natural killer (NK) cells to mediate tumor cell lysis. Interacts with CD247 and FCER1G. Selectively expressed by both resting and activated NK cells.

For Research Use Only

A Reliable Research Partner in Life Science and Medicine

Toll-free: 1-888-852-8623

Web: www.elabscience.com

Tel: 1-832-243-6086

Email: techsupport@elabscience.com

Fax: 1-832-243-6017