

# Recombinant Mouse IL1RL1/ST2 Protein (His Tag)

Catalog Number: PKSM041050



**Note:** Centrifuge before opening to ensure complete recovery of vial contents.

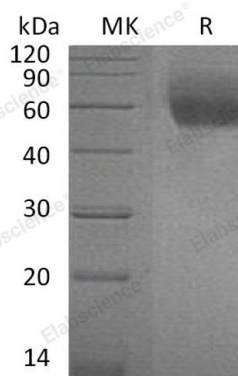
## Description

<b>Species</b>	Mouse
<b>Mol_Mass</b>	36.6 kDa
<b>Accession</b>	P14719-2
<b>Bio-activity</b>	Not validated for activity

## Properties

<b>Purity</b>	> 95 % as determined by reducing SDS-PAGE.
<b>Endotoxin</b>	< 1.0 EU per µg of the protein as determined by the LAL method.
<b>Storage</b>	Generally, lyophilized proteins are stable for up to 12 months when stored at -20 to -80 °C. Reconstituted protein solution can be stored at 4-8°C for 2-7 days. Aliquots of reconstituted samples are stable at < -20°C for 3 months.
<b>Shipping</b>	This product is provided as lyophilized powder which is shipped with ice packs.
<b>Formulation</b>	Lyophilized from a 0.2 µm filtered solution of PBS, pH 7.4. Normally 5% - 8% trehalose, mannitol and 0.01% Tween 80 are added as protectants before lyophilization. Please refer to the specific buffer information in the printed manual.
<b>Reconstitution</b>	Please refer to the printed manual for detailed information.

## Data



> 95 % as determined by reducing SDS-PAGE.

## Background

ST2, also called IL-1 R4, is an Interleukin-1 receptor family glycoprotein that plays a role in Th2 immune responses. ST2 is expressed on the surface of mast cells, activated Th2 cells, macrophages, and cardiac myocytes. This receptor is very similar to the IL-1 receptor type I and the IL-18 receptor  $\alpha$  chain in that ST2 also has three extracellular Ig domains and an intracellular Toll domain. ST2 binds IL-33, enhances inflammatory cytokines by activating nuclear factor- $\kappa$ B (NF- $\kappa$ B) and mitogen activated protein (MAP) kinases. ST2 exists as either a membrane bound form (ST2L) or as a soluble form (sST2). ST2L acts as a transmembrane signalling receptor for IL-33 by mediating the effect of IL-33 on the inflammatory process, while sST2 can suppress IL-33 activity.

## For Research Use Only

A Reliable Research Partner in Life Science and Medicine  
Tel:400-999-2100

Email:[techsupport@elabscience.cn](mailto:techsupport@elabscience.cn)

Web:[www.elabscience.cn](http://www.elabscience.cn)

Rev. V3.3