

Cyclin E1 Polyclonal Antibody

Catalog Number: E-AB-31074 2 Publications



Note: Centrifuge before opening to ensure complete recovery of vial contents.

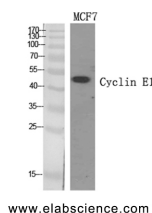
Description

Reactivity	Human, Mouse, Rat
Immunogen	Synthesized peptide derived from the Internal region of human Cyclin E1
Host	Rabbit
Isotype	IgG
Purification	Affinity purification
Conjugation	Unconjugated
Formulation	PBS with 0.02% sodium azide, 0.5% protective protein and 50% glycerol, pH7.4

Applications Recommended Dilution

WB	1:500-1:2000
IHC	1:100-1:300
IF	1:200-1:1000
ELISA	1:20000

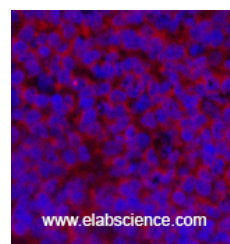
Data



Western Blot analysis of MCF7 cells using Cyclin E1 Polyclonal Antibody at dilution of 1:500.

Observed MW: 49kDa

Calculated Mw: 47kDa



Immunofluorescence analysis of Rat spleen tissue using Cyclin E1 Polyclonal Antibody at dilution of 1:200.

Preparation & Storage

Storage Store at -20°C. Avoid freeze / thaw cycles.

Background

Essential for the control of the cell cycle at the G1/S (start) transition.

For Research Use Only

A Reliable Research Partner in Life Science and Medicine

Toll-free: 1-888-852-8623

Web: www.elabscience.com

Tel: 1-832-243-6086

Email: techsupport@elabscience.com

Fax: 1-832-243-6017