

CD40/TNFRSF5 Monoclonal Antibody

catalog number: AN200109P

Note: Centrifuge before opening to ensure complete recovery of vial contents.

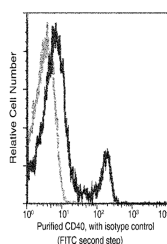
Description

Reactivity	Human
Immunogen	Recombinant Human CD40 / TNFRSF5 protein
Host	Mouse
Isotype	IgG1
Clone	8C10
Purification	Protein A
Buffer	0.2 µm filtered solution in PBS

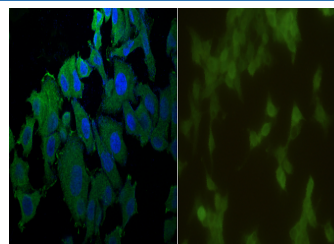
Applications

Applications	Recommended Dilution
ICC/IF	1:20-1:100
FCM	1:25-1:100

Data



Flow cytometric analysis of human CD40 expression on human whole blood lymphocytes. Human whole blood lymphocytes were stained with purified anti-Human CD40, then a FITC-conjugated second step antibody. The histogram was derived from gated events with the forward and side light-scatter characteristics of viable lymphocytes.



Immunofluorescence analysis of Human CD40 in Hep G2 cells. Cells were fixed with 4% PFA, blocked with 10% serum, and incubated with Mouse anti-Human CD40 Monoclonal Antibody (1:60) at 37°C 1 hour. Then cells were stained with the Alexa Fluor® 488-conjugated Goat Anti-mouse IgG secondary antibody (left panel, captured by laser confocal scanning microscope; right panel, captured by fluorescence microscope), counterstained with DAPI for nuclear staining (blue). Positive staining was localized to cytoplasm and cytomembrane.

Preparation & Storage

Storage	This antibody can be stored at 2°C-8°C for one month without detectable loss of activity. Antibody products are stable for twelve months from date of receipt when stored at -20°C to -80°C. Preservative-Free. Avoid repeated freeze-thaw cycles.
Shipping	Ice bag

Background

CD40 is a type I transmembrane glycoprotein belonging to the TNF receptor superfamily. The mature hCD40 consists of a 172 amino acid (aa) extracellular domain, a 22 aa transmembrane region and a 62 aa cytoplasmic domain. Human and mouse CD40 share 62% aa identity. CD40 is expressed in B cells, follicular dendritic cells, dendritic cells, activated monocytes, macrophages, endothelial cells, vascular smooth muscle cells, and several tumor cell lines.

For Research Use Only