

## Recombinant Phospho-Stat5 (Tyr694) Monoclonal Antibody

catalog number: **AN300379L**

**Note:** Centrifuge before opening to ensure complete recovery of vial contents.

### Description

<b>Reactivity</b>	Human
<b>Immunogen</b>	A synthetic phosphopeptide corresponding to residues around Tyr694 of human Phospho-Stat5.
<b>Host</b>	Rabbit
<b>Isotype</b>	IgG
<b>Clone</b>	11G2
<b>Purification</b>	Protein A
<b>Buffer</b>	10 mM sodium HEPES, 150 mM NaCl, 100 µg/mL protein protectant, 50% glycerol, pH 7.5

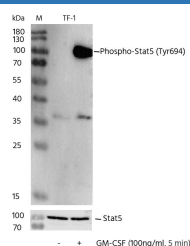
### Applications

### Recommended Dilution

**WB**

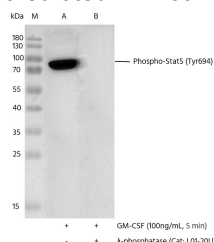
1:2000-1:200000

### Data



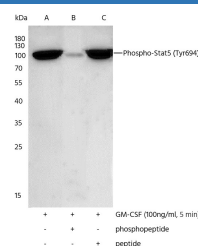
Western blot analysis of extracts from serum-starved TF-1, untreated (-) or treated with GM-CSF (100 ng/mL, 5 min; +), using Phospho-Stat5 (Tyr694) Antibody, Rabbit MAb at 1:1000 dilution. (upper) or Anti-STAT5a Antibody, Rabbit PAb, Antigen Affinity Purified at 1:500 dilution(lower).

**Observed-MW:100 kDa**  
**Calculated-MW:90 kDa**



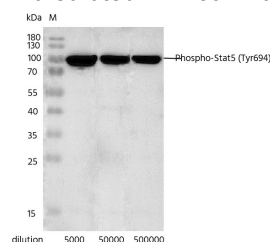
Western blot analysis of extracts from serum-starved TF-1, treated with GM-CSF (100 ng/mL, 5 min) (line A); treated with GM-CSF and λ-phosphatase (line B) using Phospho-Stat5 (Tyr694) Antibody, Rabbit MAb at 1:10000 dilution.

**Observed-MW:100 kDa**  
**Calculated-MW:90 kDa**



Western blot analysis of extracts from serum-starved TF-1 treated with GM-CSF (100ng/ml, 5min; +), without peptide (line A) or antigen-specific phosphopeptide (line B) or antigen-specific peptide (line C) using Phospho-Stat5 (Tyr694) Antibody, Rabbit MAb at 1:10000 dilution.

**Observed-MW:100 kDa**  
**Calculated-MW:90 kDa**



Western blot analysis of extracts from serum-starved TF-1 treated with GM-CSF (100 ng/mL, 5 min), using Phospho-Stat5 (Tyr694) Antibody, Rabbit MAb at 1:5000, 1:50000, 1:500000 dilution.

**Observed-MW:100 kDa**  
**Calculated-MW:90 kDa**

### Preparation & Storage

### For Research Use Only

Toll-free: 1-888-852-8623  
Web: [www.elabscience.com](http://www.elabscience.com)

Tel: 1-832-243-6086  
Email: [techsupport@elabscience.com](mailto:techsupport@elabscience.com)

Fax: 1-832-243-6017

Rev. V1.0

**Storage**

This antibody can be stored at 2°C-8°C for one month without detectable loss of activity. Antibody products are stable for twelve months from date of receipt when stored at -20°C to -80°C. Preservative-Free. Avoid repeated freeze-thaw cycles.

**Shipping**

Ice bag

**Background**

The protein encoded by this gene is a member of the STAT family of transcription factors. In response to cytokines and growth factors, STAT family members are phosphorylated by the receptor associated kinases, and then form homo- or heterodimers that translocate to the cell nucleus where they act as transcription activators. This protein is activated by, and mediates the responses of many cell ligands, such as IL2, IL3, IL7 GM-CSF, erythropoietin, thrombopoietin, and different growth hormones. Activation of this protein in myeloma and lymphoma associated with a TEL/JAK2 gene fusion is independent of cell stimulus and has been shown to be essential for tumorigenesis. The mouse counterpart of this gene is found to induce the expression of BCL2L1/BCL-X(L), which suggests the antiapoptotic function of this gene in cells. Alternatively spliced transcript variants have been found for this gene.

**For Research Use Only**

Toll-free: 1-888-852-8623  
Web: [www.elabscience.com](http://www.elabscience.com)

Tel: 1-832-243-6086  
Email: [techsupport@elabscience.com](mailto:techsupport@elabscience.com)

Fax: 1-832-243-6017

Rev. V1.0