

NCR1 Polyclonal Antibody

Catalog Number:E-AB-52126



Note: Centrifuge before opening to ensure complete recovery of vial contents.

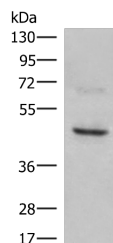
Description

Reactivity	Human
Immunogen	Synthetic peptide of human NCR1
Host	Rabbit
Isotype	IgG
Purification	Antigen affinity purification
Conjugation	Unconjugated
Formulation	PBS with 0.05% NaN ₃ and 40% Glycerol,pH7.4

Applications Recommended Dilution

WB	1:500-1:2000
ELISA	1:5000-1:10000

Data



Western blot analysis of SKOV3 cell lysate using NCR1 Polyclonal Antibody at dilution of 1:350

Observed Mw:Refer to figures

Calculated Mw:34 kDa

Preparation & Storage

Storage Store at -20°C. Avoid freeze / thaw cycles.

Background

Natural cytotoxicity triggering receptor 1 is a protein that in humans is encoded by the NCR1 gene. NCR1 has also been designated as CD335 (cluster of differentiation 335). Cytotoxicity-activating receptor that may contribute to the increased efficiency of activated natural killer (NK) cells to mediate tumor cell lysis. Interacts with CD247 and FCER1G. Selectively expressed by both resting and activated NK cells.

For Research Use Only

A Reliable Research Partner in Life Science and Medicine

Toll-free: 1-888-852-8623

Web: www.elabscience.com

Tel: 1-832-243-6086

Email: techsupport@elabscience.com

Fax: 1-832-243-6017