

# Recombinant Human Carboxypeptidase B1/CPB1 Protein (His Tag)

Catalog Number: PKSH032171



**Note:** Centrifuge before opening to ensure complete recovery of vial contents.

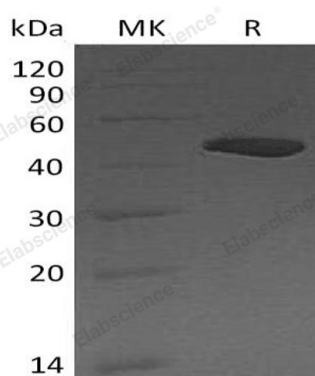
## Description

<b>Species</b>	Human
<b>Mol_Mass</b>	46.9 kDa
<b>Accession</b>	P15086
<b>Bio-activity</b>	Not validated for activity

## Properties

<b>Purity</b>	> 95 % as determined by reducing SDS-PAGE.
<b>Endotoxin</b>	< 1.0 EU per µg of the protein as determined by the LAL method.
<b>Storage</b>	Store at < -20°C, stable for 6 months. Please minimize freeze-thaw cycles.
<b>Shipping</b>	This product is provided as liquid. It is shipped at frozen temperature with blue ice/gel packs. Upon receipt, store it immediately at < -20°C.
<b>Formulation</b>	Supplied as a 0.2 µm filtered solution of 20mM MES, 150mM NaCl, pH 5.5.
<b>Reconstitution</b>	Not Applicable

## Data



> 95 % as determined by reducing SDS-PAGE.

## Background

Carboxypeptidase B1 is an exopeptidase which specifically cleaves the C-terminal Arg and Lys residues with a preference for Arg. Expressed mainly in pancreas, CPB1 is a useful serum marker for acute pancreatitis and pancreatic graft rejection. Human CPB1 consists of a signal peptide, a pro region, and a mature chain. The purified rhCPB1 corresponds to the pro form, which can be activated by trypsin, the only pancreatic protease capable of generating active enzyme from the zymogen in vitro.

## For Research Use Only