

MTA2 Polyclonal Antibody

Catalog Number:E-AB-19422



Note: Centrifuge before opening to ensure complete recovery of vial contents.

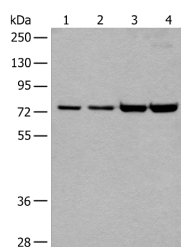
Description

Reactivity	Human, Mouse
Immunogen	Synthetic peptide of human MTA2
Host	Rabbit
Isotype	IgG
Purification	Antigen affinity purification
Conjugation	Unconjugated
Formulation	PBS with 0.05% NaN ₃ and 40% Glycerol,pH7.4

Applications Recommended Dilution

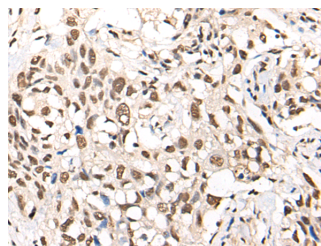
WB	1:500-1:2000
IHC	1:25-1:100
ELISA	1:5000-1:10000

Data



Western blot analysis of 293T and HeLa cell lysates using MTA2 Polyclonal Antibody at dilution of 1:400

Observed MW:Refer to figures
Calculated Mw:75 kDa



Immunohistochemistry of paraffin-embedded Human lung cancer tissue using MTA2 Polyclonal Antibody at dilution of 1:40(×200)

Preparation & Storage

Storage Store at -20°C. Avoid freeze / thaw cycles.

Background

Metastasis-associated protein MTA2,also named as MTA1L1 or PID,is a 668 amino acid protein,which contains one BAH domain,one ELM2 domain,one GATA-type zinc finger and one SANT domain. MTA2 localizes in the nucleus and is widely expressed in many tissues. MTA2 may be involved in the regulation of gene expression as repressor and activator.

For Research Use Only

A Reliable Research Partner in Life Science and Medicine

Toll-free: 1-888-852-8623

Web: www.elabscience.com

Tel: 1-832-243-6086

Email: techsupport@elabscience.com

Fax: 1-832-243-6017