

## Recombinant STML2 Monoclonal Antibody

catalog number: **AN301155L**

**Note:** Centrifuge before opening to ensure complete recovery of vial contents.

### Description

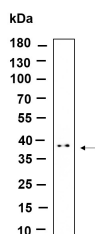
<b>Reactivity</b>	Human;Mouse;Rat
<b>Immunogen</b>	Recombinant Human STML2 protein
<b>Host</b>	Rabbit
<b>Isotype</b>	IgG, $\kappa$
<b>Clone</b>	11G4
<b>Purification</b>	Protein A
<b>Buffer</b>	PBS, 50% glycerol, 0.05% Proclin 300, 0.05% protein protectant.

### Applications

### Recommended Dilution

<b>WB</b>	1:2000-1:10000
-----------	----------------

### Data



Western Blot with Recombinant STML2 Monoclonal Antibody at dilution of 1:1000 dilution. Lane A: K562 lysate.

**Observed-MW:39 kDa**

**Calculated-MW:39 kDa**

### Preparation & Storage

<b>Storage</b>	Store at -20°C Valid for 12 months. Avoid freeze / thaw cycles.
<b>Shipping</b>	Ice bag

### Background

Enables GTPase binding activity; T cell receptor binding activity; and cardiolipin binding activity. Involved in intracellular calcium ion homeostasis; mitochondrion organization; and protein complex oligomerization. Acts upstream of or within T cell receptor signaling pathway. Located in several cellular components, including immunological synapse; membrane raft; and mitochondrial envelope.

### For Research Use Only