

Recombinant Human BCL-W/BCL2L2 Protein (His Tag)



Catalog Number: PKSH032116

Note: Centrifuge before opening to ensure complete recovery of vial contents.

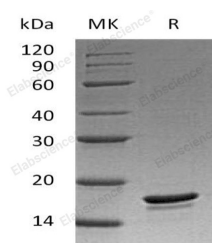
Description

Synonyms	Bcl-2-Like Protein 2; Bcl2-L-2; Apoptosis Regulator Bcl-W; BCL2L2; BCLW; KIAA0271
Species	Human
Expression Host	E.coli
Sequence	Ala2-Thr172
Accession	AAI13523.1
Calculated Molecular Weight	19.9 kDa
Observed molecular weight	18 kDa
Tag	C-His

Properties

Purity	> 95 % as determined by reducing SDS-PAGE.
Endotoxin	< 1.0 EU per µg of the protein as determined by the LAL method.
Storage	Store at < -20°C, stable for 6 months. Please minimize freeze-thaw cycles.
Shipping	This product is provided as liquid. It is shipped at frozen temperature with blue ice/gel packs. Upon receipt, store it immediately at < -20°C.
Formulation	Supplied as a 0.2 µm filtered solution of 25mM HEPES, 100mM KCl, 20% Glycerol, pH 7.5.
Reconstitution	Not Applicable

Data



> 95 % as determined by reducing SDS-PAGE.

Background

Bcl-2-like protein 2 (BCL2L2) belongs to the Bcl-2 family. BCL2L2 is highly expressed in the brain, spinal cord, testis, pancreas, heart, spleen, and mammary glands. BCL2L2 is a peripheral membrane protein containing three motifs, BH1, BH2 and BH4. The BH4 motif appears to be involved in the anti-apoptotic function. The BH1 and BH2 motifs form a hydrophobic groove which acts as a docking site for the BH3 domain of some pro-apoptotic proteins. BCL2L2 promotes cell survival and blocks dexamethasone-induced apoptosis. Furthermore, BCL2L2 mediates survival of postmitotic Sertoli cells by suppressing death-promoting activity of BAX.

For Research Use Only

A Reliable Research Partner in Life Science and Medicine

Toll-free: 1-888-852-8623

Web: www.elabscience.com

Tel: 1-832-243-6086

Email: techsupport@elabscience.com

Fax: 1-832-243-6017