

N-cadherin Polyclonal Antibody

catalog number: E-AB-70061

Note: Centrifuge before opening to ensure complete recovery of vial contents.

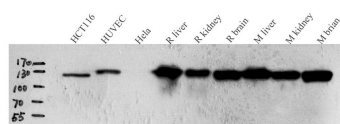
Description

Reactivity	Human;Mouse;Rat
Immunogen	KLH conjugated Synthetic peptide corresponding to Mouse N-cadherin
Host	Rabbit
Isotype	IgG
Purification	Affinity purification
Conjugation	Unconjugated
buffer	Phosphate buffered solution, pH 7.4, containing 0.05% stabilizer, 1% protein protectant and 50% glycerol.

Applications

Applications	Recommended Dilution
WB	1:500-1:2000
IHC	1:300-1:800

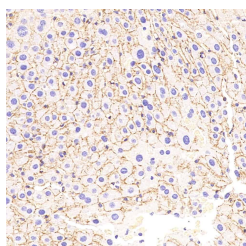
Data



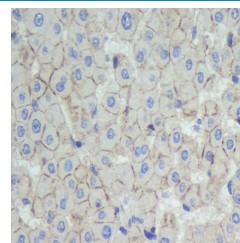
Western Blot analysis of various samples using N-cadherin Polyclonal Antibody at dilution of 1:1000.

Observed-MV:120 kDa

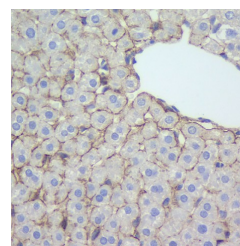
Calculated-MV:100/120/140 kDa



Immunohistochemistry analysis of paraffin-embedded Mouse liver using N-cadherin Polyclonal Antibody at dilution of 1:500.



Immunohistochemistry analysis of paraffin-embedded human liver using N-cadherin Polyclonal Antibody at dilution of 1:500.



Immunohistochemistry analysis of paraffin-embedded rat liver using N-cadherin Polyclonal Antibody at dilution of 1:500.

Preparation & Storage

Storage	Store at -20°C Valid for 12 months. Avoid freeze / thaw cycles.
Shipping	The product is shipped with ice pack, upon receipt, store it immediately at the temperature recommended.

Background

For Research Use Only

N-cadherin Polyclonal Antibody

catalog number: E-AB-70061



Cadherins are a family of transmembrane glycoproteins that mediate calcium-dependent cell-cell adhesion and play an important role in the maintenance of normal tissue architecture. N-cadherin (neural cadherin), also known as CDH2 (cadherin 2), is a classical member of the cadherin superfamily which also includes E-, P-, R-, and B-cadherins. Expression of N-cadherin has been reported on various cell types including neurons, endothelial cells, and cardiac myocytes. N-cadherin has functions in early brain morphogenesis, synaptogenesis, and synaptic plasticity.

For Research Use Only

A Reliable Research Partner in Life Science and Medicine
Tel: 400-999-2100

Email: techsupport@elabscience.cn

Web: www.elabscience.cn

Rev. V1.7