

## Recombinant Cdc2 Monoclonal Antibody

catalog number: **AN300871L**

**Note:** Centrifuge before opening to ensure complete recovery of vial contents.

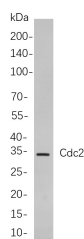
### Description

<b>Reactivity</b>	Human;Mouse
<b>Immunogen</b>	Recombinant Human Cdc2 protein
<b>Host</b>	Rabbit
<b>Isotype</b>	IgG, $\kappa$
<b>Clone</b>	9B9
<b>Purification</b>	Protein A
<b>Buffer</b>	PBS, 50% glycerol, 0.05% Proclin 300, 0.05% protein protectant.

### Applications Recommended Dilution

<b>WB</b>	1:2000-1:10000
-----------	----------------

### Data



Western Blot with Recombinant Cdc2 Monoclonal Antibody  
at dilution of 1:1000 dilution. Lane A: K562 cells.

**Observed-MW:34 kDa**

**Calculated-MW:34 kDa**

### Preparation & Storage

<b>Storage</b>	Store at -20°C Valid for 12 months. Avoid freeze / thaw cycles.
<b>Shipping</b>	Ice bag

### Background

CDK1(cyclin dependent kinase 1) Homo sapiens The protein encoded by this gene is a member of the Ser/Thr protein kinase family. This protein is a catalytic subunit of the highly conserved protein kinase complex known as M-phase promoting factor (MPF), which is essential for G1/S and G2/M phase transitions of eukaryotic cell cycle. Mitotic cyclins stably associate with this protein and function as regulatory subunits. The kinase activity of this protein is controlled by cyclin accumulation and destruction through the cell cycle. The phosphorylation and dephosphorylation of this protein also play important regulatory roles in cell cycle control. Alternatively spliced transcript variants encoding different isoforms have been found for this gene.

### For Research Use Only

Toll-free: 1-888-852-8623  
Web: [www.elabscience.com](http://www.elabscience.com)

Tel: 1-832-243-6086  
Email: [techsupport@elabscience.com](mailto:techsupport@elabscience.com)

Fax: 1-832-243-6017

Rev. V1.0