

UBTD2 Polyclonal Antibody

Catalog Number: E-AB-17505



Note: Centrifuge before opening to ensure complete recovery of vial contents.

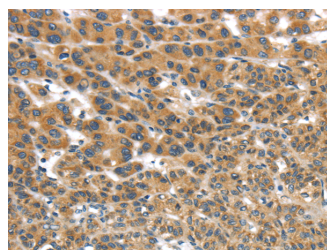
Description

Reactivity	Human, Mouse
Immunogen	Synthetic peptide of human UBTD2
Host	Rabbit
Isotype	IgG
Purification	Affinity purification
Conjugation	Unconjugated
Formulation	PBS with 0.05% sodium azide and 50% glycerol, PH7.4

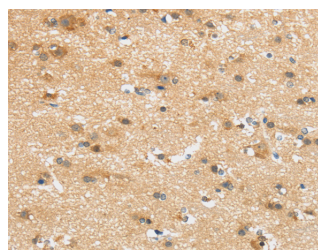
Applications Recommended Dilution

IHC	1:30-150
ELISA	1:2000-10000

Data



Immunohistochemistry of paraffin-embedded Human liver cancer tissue using UBTD2 Polyclonal Antibody at dilution 1:35



Immunohistochemistry of paraffin-embedded Human brain tissue using UBTD2 Polyclonal Antibody at dilution 1:35

Preparation & Storage

Storage Store at -20°C. Avoid freeze / thaw cycles.

Background

UBTD2 (ubiquitin domain containing 2), also known as DCUBP (dendritic cell-derived ubiquitin-like protein), DC-UbP or SB72, is a 234 amino acid cytoplasmic and mitochondrial ubiquitin-like (UbL) protein that contains one C-terminal UbL domain. UbL proteins are involved in a variety of cellular processes, including DNA repair, protein sorting, apoptosis, protein degradation, cell division and autophagy. Predominantly expressed in dendritic cells and detected at high levels in tumor cell lines, UBTD2 has been implicated in apoptosis, cellular differentiation and tumorigenesis. The UbL domain of UBTD2 is 55% similar and 28.6% identical to the amino acid sequence of ubiquitin, but it lacks the Gly-Gly motif that is essential for ubiquitination. As its UbL domain does not actively ubiquitinate proteins, UBTD2 is believed to function as a shuttle factor involved in the ubiquitin system.

For Research Use Only

A Reliable Research Partner in Life Science and Medicine

Toll-free: 1-888-852-8623

Web: www.elabscience.com

Tel: 1-832-243-6086

Email: techsupport@elabscience.com

Fax: 1-832-243-6017