

Recombinant CD146/MCAM Monoclonal Antibody

catalog number: **AN300300P**

Note: Centrifuge before opening to ensure complete recovery of vial contents.

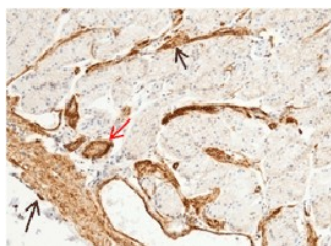
Description

Reactivity	Human
Immunogen	Recombinant Human CD146 protein
Host	Rabbit
Isotype	IgG
Clone	5A9
Purification	Protein A
Buffer	0.2 µm filtered solution in PBS

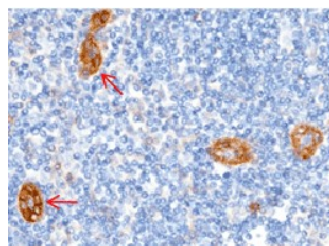
Applications Recommended Dilution

WB	1:500-1:2000
IHC-P	1:100-1:500

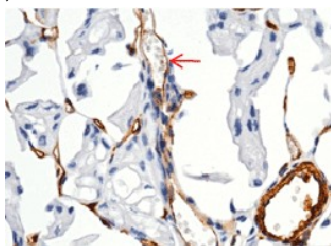
Data



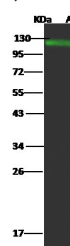
Immunohistochemistry of paraffin-embedded human stomach using CD146/MCAM Monoclonal Antibody at dilution of 1:200 (red arrow: membrane staining of endothelial cells, black arrow: smooth muscle cells).



Immunohistochemistry of paraffin-embedded human lymphonode using CD146/MCAM Monoclonal Antibody at dilution of 1:200 (red arrow: membrane staining of endothelial cells, black arrow: smooth muscle cells).



Immunohistochemistry of paraffin-embedded human kidney using CD146/MCAM Monoclonal Antibody at dilution of 1:200 (red arrow: membrane staining of endothelial cells).



Western Blot with CD146 Monoclonal Antibody at dilution of 1:500 dilution. Lane A: HeLa Whole Cell Lysate, Lysates/proteins at 30 µg per lane.

Observed-MW: 115 kDa
Calculated-MW: 72 kDa

Preparation & Storage

Storage	This antibody can be stored at 2°C-8°C for one month without detectable loss of activity. Antibody products are stable for twelve months from date of receipt when stored at -20°C to -80°C. Preservative-Free. Avoid repeated freeze-thaw cycles.
Shipping	Ice bag

Background

For Research Use Only

Toll-free: 1-888-852-8623
Web: www.elabscience.com

Tel: 1-832-243-6086
Email: techsupport@elabscience.com

Fax: 1-832-243-6017

Rev. V1.0

Plays a role in cell adhesion, and in cohesion of the endothelial monolayer at intercellular junctions in vascular tissue. Its expression may allow melanoma cells to interact with cellular elements of the vascular system, thereby enhancing hematogeneous tumor spread. Could be an adhesion molecule active in neural crest cells during embryonic development. Acts as surface receptor that triggers tyrosine phosphorylation of FYN and PTK2/FAK1, and a transient increase in the intracellular calcium concentration.

For Research Use Only

Toll-free: 1-888-852-8623

Web: www.elabscience.com

Tel: 1-832-243-6086

Email: techsupport@elabscience.com

Fax: 1-832-243-6017

Rev. V1.0