

Recombinant MDR1 Monoclonal Antibody

catalog number: **AN300819L**

Note: Centrifuge before opening to ensure complete recovery of vial contents.

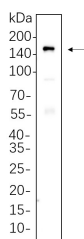
Description

Reactivity	Human
Immunogen	Recombinant Human MDR1 protein
Host	Rabbit
Isotype	IgG, κ
Clone	B762
Purification	Protein A
Buffer	PBS, 50% glycerol, 0.05% Proclin 300, 0.05% protein protectant.

Applications Recommended Dilution

IHC	1:200-1:1000
WB	1:2000-1:10000
IF	1:200-1:1000
ELISA	1:5000-1:20000

Data



Western Blot with Recombinant MDR1 Monoclonal Antibody at dilution of 1:1000 dilution. Lane A: SH-SY5Y cell lysate.

Observed-MW:141 kDa

Calculated-MW:141 kDa

Preparation & Storage

Storage	Store at -20°C Valid for 12 months. Avoid freeze / thaw cycles.
Shipping	Ice bag

Background

The membrane-associated protein encoded by this gene is a member of the superfamily of ATP-binding cassette (ABC) transporters. ABC proteins transport various molecules across extra- and intra-cellular membranes. ABC genes are divided into seven distinct subfamilies (ABC1, MDR/TAP, MRP, ALD, OABP, GCN20, White). This protein is a member of the MDR/TAP subfamily. Members of the MDR/TAP subfamily are involved in multidrug resistance. The protein encoded by this gene is an ATP-dependent drug efflux pump for xenobiotic compounds with broad substrate specificity. It is responsible for decreased drug accumulation in multidrug-resistant cells and often mediates the development of resistance to anticancer drugs. This protein also functions as a transporter in the blood-brain barrier.

For Research Use Only