

Recombinant PCNA Monoclonal Antibody

catalog number: **AN300418P**

Note: Centrifuge before opening to ensure complete recovery of vial contents.

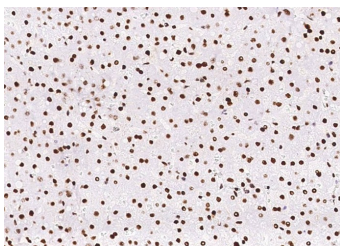
Description

Reactivity	Human
Immunogen	Recombinant Human PCNA Protein
Host	Rabbit
Isotype	IgG
Clone	3G2
Purification	Protein A
Buffer	0.2 µm filtered solution in PBS

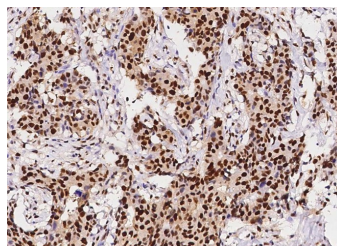
Applications Recommended Dilution

WB	1:500-1:2000
IHC-P	1:100-1:500

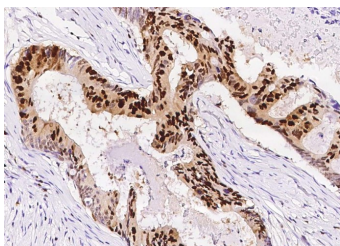
Data



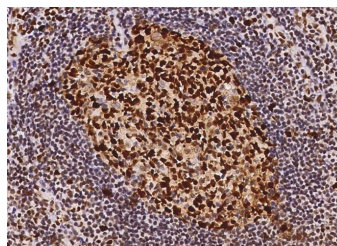
Immunohistochemistry of paraffin-embedded human liver using PCNA Monoclonal Antibody at dilution of 1:200.



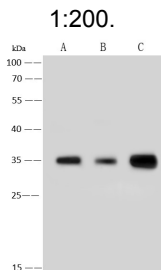
Immunohistochemistry of paraffin-embedded human breast carcinoma using PCNA Monoclonal Antibody at dilution of 1:200.



Immunohistochemistry of paraffin-embedded human breast carcinoma using PCNA Monoclonal Antibody at dilution of 1:200.



Immunohistochemistry of paraffin-embedded human lymph node using PCNA Monoclonal Antibody at dilution of 1:200.



For Research Use Only

Toll-free: 1-888-852-8623
Web: www.elabscience.com

Tel: 1-832-243-6086
Email: techsupport@elabscience.com

Fax: 1-832-243-6017

Rev. V1.0

Western Blot with PCNA rabbit polyclonal antibody at dilution of 1:500 dilution. Lane A: Hela Whole Cell Lysate, Lane B: MCF-7 Whole Cell Lysate, Lane C: MOLT-4 Whole Cell Lysate, Lysates/proteins at 30 µg per lane.

Observed-MW:35 kDa

Calculated-MW:29 kDa

Preparation & Storage

Storage	This antibody can be stored at 2°C-8°C for one month without detectable loss of activity. Antibody products are stable for twelve months from date of receipt when stored at -20°C to -80°C. Preservative-Free. Avoid repeated freeze-thaw cycles.
Shipping	Ice bag

Background

Proliferating cell nuclear antigen (PCNA) is a DNA clamp that acts as a processivity factor for DNA polymerase δ in eukaryotic cells and is essential for replication. PCNA is a homotrimer and achieves its processivity by encircling the DNA, where it acts as a scaffold to recruit proteins involved in DNA replication, DNA repair, chromatin remodeling and epigenetics. PCNA gene is often stably and constitutively expressed in most tissues and cells, it is commonly used as a loading control for western blot and other test.

For Research Use Only

Toll-free: 1-888-852-8623
Web: www.elabscience.com

Tel: 1-832-243-6086
Email: techsupport@elabscience.com

Fax: 1-832-243-6017

Rev. V1.0