

## Recombinant Laminin Receptor Monoclonal Antibody

catalog number: **AN301586L**

**Note:** Centrifuge before opening to ensure complete recovery of vial contents.

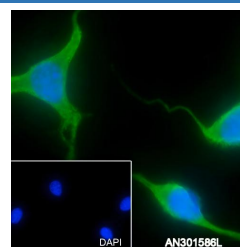
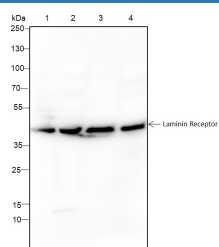
### Description

<b>Reactivity</b>	Human;Mouse
<b>Immunogen</b>	Recombinant human Laminin Receptor fragment
<b>Host</b>	Rabbit
<b>Isotype</b>	IgG, $\kappa$
<b>Clone</b>	A285
<b>Purification</b>	Protein A purified
<b>Buffer</b>	PBS, 50% glycerol, 0.05% Proclin 300, 0.05% protein protectant.

### Applications Recommended Dilution

<b>WB</b>	1:1000-1:5000
<b>IF</b>	1:50

### Data



Western Blot with Laminin Receptor Monoclonal Antibody at dilution of 1:5000. Lane 1: HeLa, Lane 2: Panc-1, Lane 3: PC-12, Lane 4: NIH/3T3

Immunofluorescent analysis of (100% Ice-cold methanol) fixed NIH/3T3 cells using anti-Laminin Receptor Monoclonal Antibody at dilution of 1:50.

**Observed-MW:45 kDa**

**Calculated-MW:45 kDa**

### Preparation & Storage

<b>Storage</b>	Store at -20°C Valid for 12 months. Avoid freeze / thaw cycles.
<b>Shipping</b>	Ice bag

### Background

Required for the assembly and/or stability of the 40S ribosomal subunit. Required for the processing of the 20S rRNA A-precursor to mature 18S rRNA in a late step of the maturation of 40S ribosomal subunits. Also functions as a cell surface receptor for laminin. Plays a role in cell adhesion to the basement membrane and in the consequent activation of signaling transduction pathways. May play a role in cell fate determination and tissue morphogenesis. Acts as a PPP1R16B-dependent substrate of PPP1CA.

### For Research Use Only