

## Elab Fluor® Violet 450 Anti-Human CD21 Antibody[HB5]

Catalog Number: E-AB-F1377Q

Note: Centrifuge before opening to ensure complete recovery of vial contents.

### Description

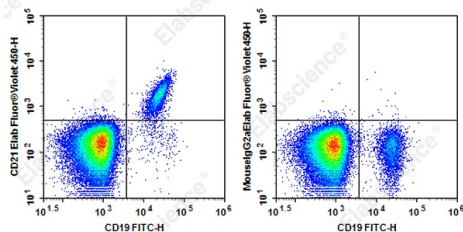
<b>Reactivity</b>	Human
<b>Host</b>	Mouse
<b>Isotype</b>	Mouse IgG2a, κ
<b>Clone No.</b>	HB5
<b>Isotype Control</b>	Elab Fluor® Violet 450 Mouse IgG2a, κ Isotype Control[C1.18.4] [Product E-AB-F09802Q]
<b>Conjugation</b>	Elab Fluor® Violet 450
<b>Conjugation Information</b>	Elab Fluor® Violet 450 is designed to be excited by the violet laser (405 nm) and detected using an optical filter centered near 450 nm (e.g., a 450/45 nm bandpass filter).
<b>Storage Buffer</b>	Phosphate buffered solution, pH 7.2, containing 0.09% stabilizer.

### Applications

### Recommended usage

<b>FCM</b>	Each lot of this antibody is quality control tested by flow cytometric analysis. <b>The amount of the reagent is suggested to be used 5 μL of antibody per test (million cells in 100 μL staining volume or per 100 μL of whole blood).</b> Please check your vial before the experiment. Since applications vary, the appropriate dilutions must be determined for individual use.
------------	---

### Data



Staining of normal human peripheral blood cells with FITC

Anti-Human CD19 Antibody and Elab Fluor® Violet 450 Anti-Human CD21 Antibody[HB5] (left) or Elab Fluor® Violet 450 Mouse IgG2a Isotype Control (right). Cells in the lymphocytes gate were used for analysis.

### Preparation & Storage

<b>Storage</b>	Keep as concentrated solution. This product can be stored at 2-8°C for 24 months. Please protected from prolonged exposure to light and do not freeze.
<b>Shipping</b>	Ice bag

### Antigen Information

<b>Alternate Names</b>	Complement receptor type 2;CR2;Cr2;Complement C3d receptor;Epstein-Barr virus receptor;EBV receptor;CD21
<b>Uniprot ID</b>	P20023

### For Research Use Only

Toll-free: 1-888-852-8623  
Web: [www.elabscience.com](http://www.elabscience.com)

Tel: 1-832-243-6086  
Email: [techsupport@elabscience.com](mailto:techsupport@elabscience.com)

Fax: 1-832-243-6017

**Gene ID**

1380

**Background**

CD21 is a 145 kD transmembrane protein also known as complement C3d receptor (C3dR), complement receptor 2 (CR2), and Epstein-Barr virus receptor. CD21 is expressed on B cells, follicular dendritic cells, subsets of normal thymocytes and T cells, and some epithelial cells. CD21 is the receptor used by Epstein-Barr virus to infect B cells and is also the complement receptor for C3d. CD21 has also been shown to interact with a number of proteins, including CD23, CD19, annexin VI, CD81, iC3b, complement receptor 1 (CR1, CD35), and interferon-alpha 1 (IFN- $\alpha$ 1).