

Recombinant Human Activin RIIA/ACVR2A Protein (Fc & His Tag)

Catalog Number: PKSH032039

Note: Centrifuge before opening to ensure complete recovery of vial contents.

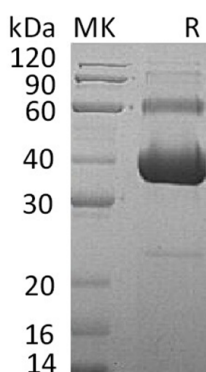
Description

Species	Human
Source	HEK293 Cells-derived Human Activin RIIA;ACVR2A protein Ala20-Pro134, with an C-terminal Fc & His
Calculated MW	41.2 kDa
Observed MW	60kDa&40kDa
Accession	P27037
Bio-activity	Immobilized Human INHBC-His at 10µg/ml (100 µl/well) can bind Human ACVR2A-Fc-His. The ED ₅₀ of Recombinant Human ACVR2A-Fc-His is 2-8 ug/ml.

Properties

Purity	> 95 % as determined by reducing SDS-PAGE.
Endotoxin	< 1.0 EU per µg of the protein as determined by the LAL method.
Storage	Generally, lyophilized proteins are stable for up to 12 months when stored at -20 to -80 °C. Reconstituted protein solution can be stored at 4-8°C for 2-7 days. Aliquots of reconstituted samples are stable at < -20°C for 3 months.
Shipping	This product is provided as lyophilized powder which is shipped with ice packs.
Formulation	Lyophilized from a 0.2 µm filtered solution of 20mM PB, 150mM NaCl, pH 7.4. Normally 5% - 8% trehalose, mannitol and 0.01% Tween 80 are added as protectants before lyophilization.
	Please refer to the specific buffer information in the printed manual.
Reconstitution	Please refer to the printed manual for detailed information.

Data



> 95 % as determined by reducing SDS-PAGE.

Background

For Research Use Only

Activin Receptor Type-2A is a protein that in humans is encoded by the ACVR2A gene. ACVR2A is an activin type 2 receptor. This gene encodes activin A type II receptor. Activins are dimeric growth and differentiation factors which belong to the transforming growth factor-beta (TGF-beta) superfamily of structurally related signaling proteins. Activins signal through a heteromeric complex of receptor serine kinases which include at least two type I (I and IB) and two type II (II and IIB) receptors. These receptors are all transmembrane proteins; composed of a ligand-binding extracellular domain with cysteine-rich region; a transmembrane domain; and a cytoplasmic domain with predicted serine/threonine specificity. Type I receptors are essential for signaling; and type II receptors are required for binding ligands and for expression of type I receptors. Type I and II receptors form a stable complex after ligand binding; resulting in phosphorylation of type I receptors by type II receptors. Type II receptors are considered to be constitutively active kinases.