

Elab Fluor® 488 Anti-Mouse Ig light chain λ Antibody[RML-42]

Catalog Number: AN00654L

Note: Centrifuge before opening to ensure complete recovery of vial contents.

Description

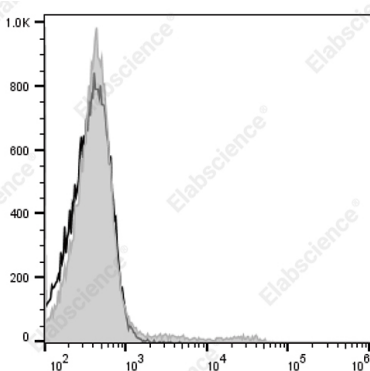
Reactivity	Mouse
Host	Rat
Isotype	Rat IgG2a, κ
Clone No.	RML-42
Isotype Control	Elab Fluor® 488 Rat IgG2a, κ Isotype Control[2A3] [Product E-AB-F09832L]
Conjugation	Elab Fluor® 488
Conjugation Information	Elab Fluor® 488 is designed to be excited by the Blue laser (488 nm) and detected using an optical filter centered near 520 nm (e.g., a 525/40 nm bandpass filter).
Storage Buffer	Phosphate buffered solution, pH 7.2, containing 0.09% stabilizer.

Applications

Recommended usage

FCM Each lot of this antibody is quality control tested by flow cytometric analysis. **The amount of the reagent is suggested to be used 5 μ L of antibody per test (million cells in 100 μ L staining volume or per 100 μ L of whole blood).** Please check your vial before the experiment. Since applications vary, the appropriate dilutions must be determined for individual use.

Data



Staining of C57BL/6 murine splenocytes cells with Elab Fluor® 488 Anti-Mouse Ig light chain λ Antibody[RML-42] (filled gray histogram) or PE/Cyanine5 Rat IgG2a, κ Isotype Control (empty black histogram). Total viable cells were used for analysis.

Preparation & Storage

Storage	Keep as concentrated solution. This product can be stored at 2-8°C for 24 months. Please protected from prolonged exposure to light and do not freeze.
Shipping	Ice bag

Antigen Information

Alternate Names	Imunoglobulin light chain lambda;AN00654
Uniprot ID	\
Gene ID	111519

For Research Use Only

Background

The RML-42 monoclonal antibody reacts with immunoglobulin light chain lambda in all tested mouse haplotype (Igh-a and b). It does not react with kappa chain. The RML-42 monoclonal antibody may be used as primary or secondary reagent for ELISA or immunofluorescent analysis.