

## Purified Anti-Human HLA-DR Antibody[L243]

Catalog Number: GF1111A

**Note:** Centrifuge before opening to ensure complete recovery of vial contents.

### Description

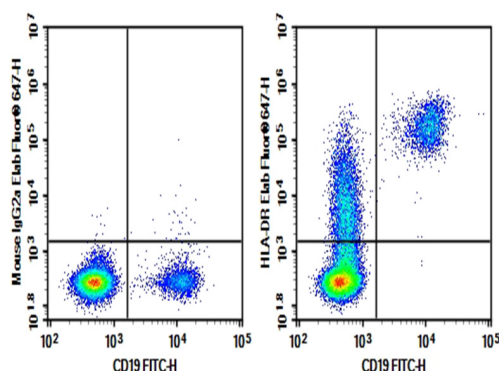
Reactivity	Human
Immunogen	Recombinant Human HLA-DR protein
Host	Mouse
Isotype	Mouse IgG2a, κ
Clone	L243
Purification	>98%, Protein A/G purified
Conjugation	Unconjugated
Buffer	Phosphate-buffered solution, pH 7.2, containing 0.05% non-protein stabilizer. Dialyze to completely remove the stabilizer prior to labeling.

### Applications

### Recommended Dilution

FCM	2 µg/mL(0.5×10 <sup>6</sup> -1×10 <sup>6</sup> cells)
-----	---

### Data



Human peripheral blood lymphocytes were stained with 0.2 µg Purified Anti-Human HLA-DR Antibody[L243](Right) and 0.2 µg Mouse IgG2a, κ Isotype Control(Left), followed by

Elab Fluor® 647-conjugated Goat Anti-Mouse IgG Secondary Antibody, then anti-Human CD19 FITC-conjugated Monoclonal Antibody.

### Preparation & Storage

Storage	Store at 4°C valid for 12 months or -20°C valid for long term storage, avoid freeze / thaw cycles.
Shipping	Ice bag

### Background

HLA-DR is a heterodimeric cell surface glycoprotein comprised of a 36 kD α (heavy) chain and a 27 kD β (light) chain. It is expressed on B cells, activated T cells, monocytes/macrophages, dendritic cells, and other non-professional APCs. In conjunction with the CD3/TCR complex and CD4 molecules, HLA-DR is critical for efficient peptide presentation to CD4+ T cells.