

## Recombinant NEK7 Monoclonal Antibody

catalog number: **E-AB-81586**

**Note:** Centrifuge before opening to ensure complete recovery of vial contents.

### Description

<b>Reactivity</b>	Mouse;Rat
<b>Immunogen</b>	A synthetic peptide of human NEK7
<b>Host</b>	Rabbit
<b>Isotype</b>	IgG
<b>Clone</b>	R04-7A1
<b>Purification</b>	Affinity Purified
<b>Buffer</b>	50mM Tris-Glycine(pH 7.4), 0.15M NaCl, 40% Glycerol, 0.05% stabilizer and 0.05% protective protein.

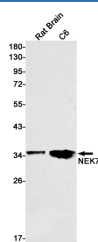
### Applications

**WB**

### Recommended Dilution

1:1000-1:2000

### Data



Western blot detection of NEK7 in Rat Brain, C6 cell lysates using NEK7 Rabbit mAb (1:1000 diluted). Predicted band size: 35 kDa. Observed band size: 35 kDa.

**Observed-MW: 35 kDa**

**Calculated-MW: 35 kDa**

### Preparation & Storage

<b>Storage</b>	Store at -20°C Valid for 12 months. Avoid freeze / thaw cycles.
<b>Shipping</b>	The product is shipped with ice pack, upon receipt, store it immediately at the temperature recommended.

### Background

NIMA-related kinases share high amino acid sequence identity with the gene product of the *Aspergillus nidulans* 'never in mitosis A' gene, which controls initiation of mitosis. Protein kinase which plays an important role in mitotic cell cycle progression. Required for microtubule nucleation activity of the centrosome, robust mitotic spindle formation and cytokinesis. Phosphorylates RPS6KB1.

### For Research Use Only