

## Recombinant Mouse BLAME/SLAMF8 Protein(Fc Tag)

Catalog Number: PDMM100133

**Note:** Centrifuge before opening to ensure complete recovery of vial contents.

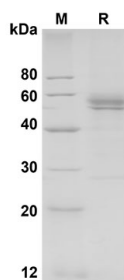
### Description

Species	Mouse
Source	Mammalian-derived Mouse BLAME/SLAMF8 proteins Val21-Asp231, with an C-terminal Fc
Calculated MW	48.1 kDa
Observed MW	56 kDa
Accession	Q9D3G2
Bio-activity	Not validated for activity

### Properties

Purity	> 90% as determined by reducing SDS-PAGE.
Endotoxin	< 1.0 EU/mg of the protein as determined by the LAL method
Storage	Generally, lyophilized proteins are stable for up to 12 months when stored at -20 to -80 °C. Reconstituted protein solution can be stored at 4-8°C for 2-7 days. Aliquots of reconstituted samples are stable at < -20°C for 3 months.
Shipping	This product is provided as lyophilized powder which is shipped with ice packs.
Formulation	Lyophilized from a 0.2 µm filtered solution in PBS with 5% Trehalose and 5% Mannitol.
Reconstitution	It is recommended that sterile water be added to the vial to prepare a stock solution of 0.5 mg/mL. Concentration is measured by UV-Vis.

### Data



SDS-PAGE analysis of Mouse BLAME/SLAMF8 proteins ,  
2µg/lane of Recombinant Mouse BLAME/SLAMF8 proteins  
was resolved with SDS-PAGE under reducing conditions ,  
showing bands at 56 KD

### Background

The signaling lymphocyte activation molecule (SLAM) family includes homophilic and heterophilic receptors that modulate both adaptive and innate immune responses. These receptors share a common ectodomain organization: a membrane-proximal immunoglobulin constant domain and a membrane-distal immunoglobulin variable domain that is responsible for ligand recognition. SLAM family of receptors is expressed by a wide range of immune cells. Through their cytoplasmic domain, SLAM family receptors associate with SLAM-associated protein (SAP)-related molecules, a group of cytoplasmic adaptors composed almost exclusively of an SRC homology 2 domain. SLAM family receptors, in association with SAP family adaptors, have crucial roles during normal immune reactions in innate and adaptive immune cells. Mouse SLAM family member 8, also known as B-lymphocyte activator macrophage expressed, BCM-like membrane protein, SLAMF8 and BLAME, is a single-pass type I membrane protein. It contains one Ig-like C2-type (immunoglobulin-like) domain. SLAMF8 / BLAME is expressed in lymph node, spleen, thymus and bone marrow. It may play a role in B-lineage commitment and/or modulation of signaling through the B-cell receptor.