

LGALS2 Polyclonal Antibody

catalog number: E-AB-92734

Note: Centrifuge before opening to ensure complete recovery of vial contents.

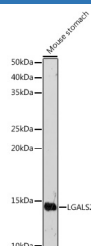
Description

| | |
|---------------------|--|
| Reactivity | Human;Mouse |
| Immunogen | Recombinant fusion protein of human LGALS2 |
| Host | Rabbit |
| Isotype | IgG |
| Purification | Affinity purification |
| Buffer | Phosphate buffered solution, pH 7.4, containing 0.05% stabilizer and 50% glycerol. |

Applications

| Applications | Recommended Dilution |
|--------------|----------------------|
| WB | 1:500-1:2000 |
| IF | 1:50-1:200 |

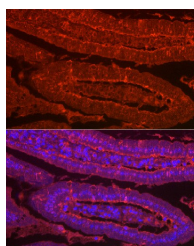
Data



Western blot analysis of extracts of Mouse stomach using LGALS2 Polyclonal Antibody at 1:500 dilution.

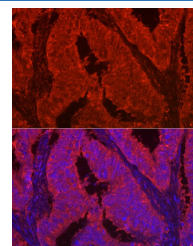
Observed-MW:15 kDa

Calculated-MW:14 kDa



Immunofluorescence analysis of mouse Intestine using LGALS2 Polyclonal Antibody at dilution of 1:100 (40x lens).

Blue: DAPI for nuclear staining.



Immunofluorescence analysis of human colon carcinoma using LGALS2 Polyclonal Antibody at dilution of 1:100 (40x lens). Blue: DAPI for nuclear staining.

Preparation & Storage

| | |
|-----------------|--|
| Storage | Store at -20°C Valid for 12 months. Avoid freeze / thaw cycles. |
| Shipping | The product is shipped with ice pack, upon receipt, store it immediately at the temperature recommended. |

Background

The protein encoded by this gene is a soluble beta-galactoside binding lectin. The encoded protein is found as a homodimer and can bind to lymphotoxin-alpha. A single nucleotide polymorphism in an intron of this gene can alter the transcriptional level of the protein, with a resultant increased risk of myocardial infarction.

For Research Use Only