

## Recombinant Human $\alpha$ -Lactalbumin/LALBA Protein (His Tag)

Catalog Number: PKSH033250

**Note:** Centrifuge before opening to ensure complete recovery of vial contents.

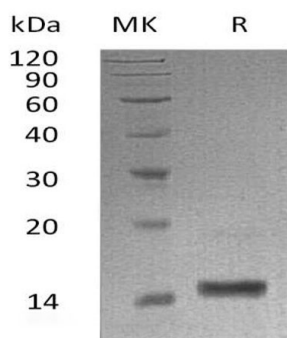
### Description

<b>Species</b>	Human
<b>Source</b>	HEK293 Cells-derived Human $\alpha$ -Lactalbumin/LALBA protein Lys20-Leu142, with an C-terminal His
<b>Calculated MW</b>	15.1 kDa
<b>Observed MW</b>	14-16 kDa
<b>Accession</b>	P00709
<b>Bio-activity</b>	Not validated for activity

### Properties

<b>Purity</b>	> 95 % as determined by reducing SDS-PAGE.
<b>Concentration</b>	Subject to label value.
<b>Endotoxin</b>	< 1.0 EU per $\mu$ g of the protein as determined by the LAL method.
<b>Storage</b>	Store at < -20°C, stable for 6 months. Please minimize freeze-thaw cycles.
<b>Shipping</b>	This product is provided as liquid. It is shipped at frozen temperature with blue ice/ gel packs. Upon receipt, store it immediately at < - 20°C.
<b>Formulation</b>	Supplied as a 0.2 $\mu$ m filtered solution of 20mM Tris-HCl, 150mM NaCl, pH 8.0.

### Data



> 95 % as determined by reducing SDS-PAGE.

### Background

Alpha-lactalbumin(LALBA) is a secreted protein that is a member of the glycosyl hydrolase 22 family. It is expressed in mammary gland in milk. It is the regulatory subunit of lactose synthase. It changes the substrate specificity of galactosyltransferase in the mammary gland making glucose a good acceptor substrate for this enzyme.

### For Research Use Only