

KLF1 Polyclonal Antibody

catalog number: E-AB-19799

Note: Centrifuge before opening to ensure complete recovery of vial contents.

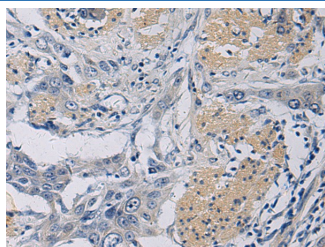
Description

Reactivity	Human
Immunogen	Synthetic peptide of human KLF1
Host	Rabbit
Isotype	IgG
Purification	Antigen affinity purification
Buffer	Phosphate buffered solution, pH 7.4, containing 0.05% stabilizer and 50% glycerol.

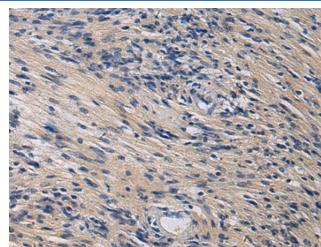
Applications Recommended Dilution

IHC	1:50-1:100
------------	------------

Data



Immunohistochemistry of paraffin-embedded Human esophagus cancer tissue using KLF1 Polyclonal Antibody at dilution of 1:35(×200)



Immunohistochemistry of paraffin-embedded Human brain tissue using KLF1 Polyclonal Antibody at dilution of 1:35(×200)

Preparation & Storage

Storage	Store at -20°C Valid for 12 months. Avoid freeze / thaw cycles.
Shipping	The product is shipped with ice pack, upon receipt, store it immediately at the temperature recommended.

Background

This gene encodes a hematopoietic-specific transcription factor that induces high-level expression of adult beta-globin and other erythroid genes. The zinc-finger protein binds to the DNA sequence CCACCCCT found in the beta hemoglobin promoter. Heterozygous loss-of-function mutations in this gene result in the dominant In(Lu) blood phenotype. KLF1 (Kruppel Like Factor 1) is a Protein Coding gene. Diseases associated with KLF1 include Dyserythropoietic Anemia, Congenital, Type Iv and Hereditary Persistence Of Fetal Hemoglobin-Sickle Cell Disease Syndrome. Among its related pathways are Hematopoietic Stem Cell Differentiation. GO annotations related to this gene include transcription factor activity, sequence-specific DNA binding and core promoter proximal region sequence-specific DNA binding. An important paralog of this gene is KLF4.

For Research Use Only