

ISY1-RAB43 Polyclonal Antibody

catalog number: E-AB-52047

Note: Centrifuge before opening to ensure complete recovery of vial contents.

Description

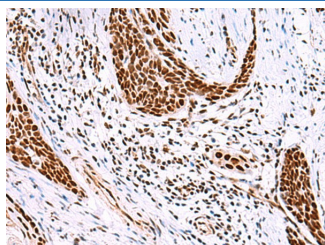
Reactivity	Human;Mouse;Rat
Immunogen	Synthetic peptide of human ISY1-RAB43
Host	Rabbit
Isotype	IgG
Purification	Antigen affinity purification
Conjugation	Unconjugated
Buffer	Phosphate buffered solution, pH 7.4, containing 0.05% stabilizer and 50% glycerol.

Applications

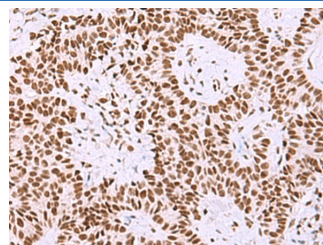
Recommended Dilution

IHC	1:40-1:200
------------	------------

Data



Immunohistochemistry of paraffin-embedded Human esophagus cancer tissue using ISY1-RAB43 Polyclonal Antibody at dilution of 1:30(×200)



Immunohistochemistry of paraffin-embedded Human ovarian cancer tissue using ISY1-RAB43 Polyclonal Antibody at dilution of 1:30(×200)

Preparation & Storage

Storage	Store at -20°C Valid for 12 months. Avoid freeze / thaw cycles.
Shipping	The product is shipped with ice pack, upon receipt, store it immediately at the temperature recommended.

Background

This locus represents naturally occurring read-through transcription between the neighboring ISY1 (ISY1 splicing factor homolog) and RAB43 (RAB43, member RAS oncogene family) gene on chromosome 3. The read-through transcript encodes a protein that shares sequence identity with the upstream gene product, but its C-terminus is distinct due to a frameshift relative to the downstream gene.