

Recombinant Phospho-Paxillin (Tyr118) Monoclonal Antibody

catalog number: **AN300384L**

Note: Centrifuge before opening to ensure complete recovery of vial contents.

Description

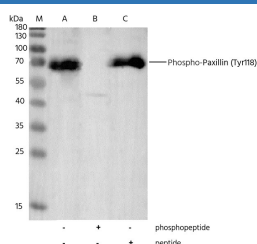
Reactivity	Human
Immunogen	A synthetic phosphopeptide corresponding to residues around Tyr118 of the Human Phospho-Paxillin
Host	Rabbit
Isotype	IgG
Clone	11G8
Purification	Protein A
Buffer	10 mM sodium HEPES, 150 mM NaCl, 100 µg/mL protein protectant, 50% glycerol, pH 7.5

Applications

Recommended Dilution

WB	1:1000-1:5000
-----------	---------------

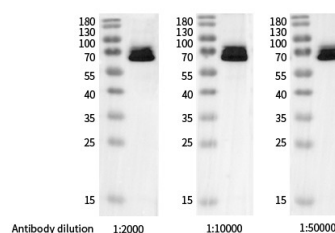
Data



Western blot analysis of extracts from A-431, untreated (line A); treated with antigen-specific phosphopeptide (line B) or antigen-specific peptide (line C) using Phospho-Paxillin (Tyr118) Antibody, Rabbit MAb at 1:1000 dilution..

Observed-MW:68 kDa

Calculated-MW:65 kDa



Western blot analysis of extracts from A-431 using Phospho-Paxillin (Tyr118) rabbit monoclonal Antibody at dilution. of 1:2000, 1:10000 and 1:50000.

Observed-MW:68 kDa

Calculated-MW:65 kDa

Preparation & Storage

Storage	This antibody can be stored at 2°C-8°C for one month without detectable loss of activity. Antibody products are stable for twelve months from date of receipt when stored at -20°C to -80°C. Preservative-Free. Avoid repeated freeze-thaw cycles.
Shipping	Ice bag

Background

This gene encodes a cytoskeletal protein involved in actin-membrane attachment at sites of cell adhesion to the extracellular matrix (focal adhesion). Alternatively spliced transcript variants encoding different isoforms have been described for this gene. These isoforms exhibit different expression pattern, and have different biochemical, as well as physiological properties (PMID:9054445).

For Research Use Only

Toll-free: 1-888-852-8623
Web: www.elabscience.com

Tel: 1-832-243-6086
Email: techsupport@elabscience.com

Fax: 1-832-243-6017

Rev. V1.0