

Recombinant CDK2 Monoclonal Antibody

catalog number: **AN300997L**

Note: Centrifuge before opening to ensure complete recovery of vial contents.

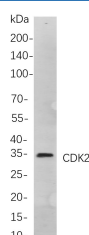
Description

Reactivity	Human;Mouse;Rat
Immunogen	Recombinant Human CDK2 protein
Host	Rabbit
Isotype	IgG, κ
Clone	B748
Purification	Protein A
Buffer	PBS, 50% glycerol, 0.05% Proclin 300, 0.05% protein protectant.

Applications

Applications	Recommended Dilution
IHC	1:1000-1:4000
WB	1:1000-1:5000
IF	1:200-1:1000
ELISA	1:5000-1:20000
IP	1:50-1:200,

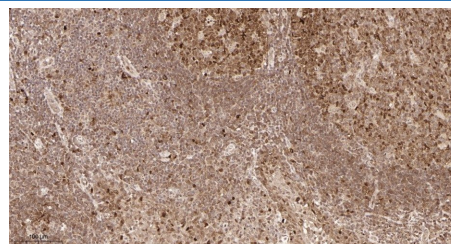
Data



Western Blot with Recombinant CDK2 Monoclonal Antibody at dilution of 1:1000 dilution. Lane A: Jurkat cells.

Observed-MW:34 kDa

Calculated-MW:34 kDa



Immunohistochemistry of paraffin-embedded human tonsil tissue using Recombinant CDK2 Monoclonal Antibody at dilution of 1:200.

Preparation & Storage

Storage	Store at -20°C Valid for 12 months. Avoid freeze / thaw cycles.
Shipping	Ice bag

Background

CDK2(cyclin dependent kinase 2) Homo sapiens This gene encodes a member of a family of serine/threonine protein kinases that participate in cell cycle regulation. The encoded protein is the catalytic subunit of the cyclin-dependent protein kinase complex, which regulates progression through the cell cycle. Activity of this protein is especially critical during the G1 to S phase transition. This protein associates with and regulated by other subunits of the complex including cyclin A or E, CDK inhibitor p21Cip1 (CDKN1A), and p27Kip1 (CDKN1B). Alternative splicing results in multiple transcript variants.

For Research Use Only

Toll-free: 1-888-852-8623
Web: www.elabscience.com

Tel: 1-832-243-6086
Email: techsupport@elabscience.com

Fax: 1-832-243-6017

Rev. V1.2