

## LAMP1 Polyclonal Antibody

**catalog number: E-AB-68328**

**Note:** Centrifuge before opening to ensure complete recovery of vial contents.

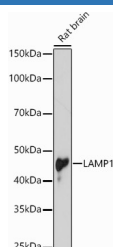
### Description

<b>Reactivity</b>	Human;Mouse;Rat
<b>Immunogen</b>	Recombinant protein of human LAMP1.
<b>Host</b>	Rabbit
<b>Isotype</b>	IgG
<b>Purification</b>	Affinity purification
<b>Buffer</b>	Phosphate buffered solution, pH 7.4, containing 0.05% stabilizer and 50% glycerol.

### Applications

<b>WB</b>	1:500-1:2000
<b>IF</b>	1:50-1:200

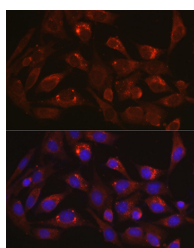
### Data



Western blot analysis of extracts of Rat brain using LAMP1 Polyclonal Antibody at 1:1000 dilution.

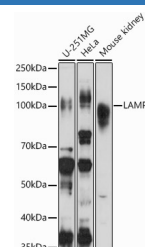
**Observed-MV:45 kDa/110 kDa**

**Calculated-MV:38 kDa/44 kDa**



Immunofluorescence analysis of BALA-3T3 cells using LAMP1 Polyclonal antibody at dilution of 1:100 (40x lens).

Blue: DAPI for nuclear staining.



Western blot analysis of extracts of various cell lines using LAMP1 Polyclonal Antibody at 1:1000 dilution.

**Observed-MV:45 kDa/110 kDa**

**Calculated-MV:38 kDa/44 kDa**

### Preparation & Storage

<b>Storage</b>	Store at -20°C Valid for 12 months. Avoid freeze / thaw cycles.
<b>Shipping</b>	The product is shipped with ice pack, upon receipt, store it immediately at the temperature recommended.

### Background

The protein encoded by this gene is a member of a family of membrane glycoproteins. This glycoprotein provides selectins with carbohydrate ligands. It may also play a role in tumor cell metastasis.

### For Research Use Only