

## EDN2 Polyclonal Antibody

**catalog number: E-AB-11198**

**Note:** Centrifuge before opening to ensure complete recovery of vial contents.

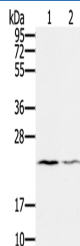
### Description

<b>Reactivity</b>	Human
<b>Immunogen</b>	Recombinant protein of human EDN2
<b>Host</b>	Rabbit
<b>Isotype</b>	IgG
<b>Purification</b>	Affinity purification
<b>Buffer</b>	Phosphate buffered solution, pH 7.4, containing 0.05% stabilizer and 50% glycerol.

### Applications

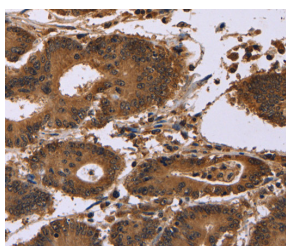
Applications	Recommended Dilution
<b>WB</b>	1:500-1:2000
<b>IHC</b>	1:50-1:200

### Data

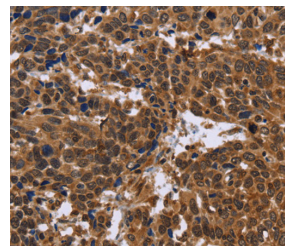


Western Blot analysis of Human normal right lung and normal left lung tissue using EDN2 Polyclonal Antibody at dilution of 1:600

**Calculated-MW:20 kDa**



Immunohistochemistry of paraffin-embedded Human colon cancer using EDN2 Polyclonal Antibody at dilution of 1:30



Immunohistochemistry of paraffin-embedded Human cervical cancer using EDN2 Polyclonal Antibody at dilution of 1:30

### Preparation & Storage

<b>Storage</b>	Store at -20°C Valid for 12 months. Avoid freeze / thaw cycles.
<b>Shipping</b>	The product is shipped with ice pack, upon receipt, store it immediately at the temperature recommended.

### Background

This gene encodes a member of the endothelin protein family of secretory vasoconstrictive peptides. The preproprotein is processed to a short mature form which functions as a ligand for the endothelin receptors that initiate intracellular signaling events. This gene product is involved in a wide range of biological processes, such as hypertension and ovulation.

### For Research Use Only