

## Recombinant Human REG4/RELP Protein (His Tag)

Catalog Number: PKSH032991

**Note:** Centrifuge before opening to ensure complete recovery of vial contents.

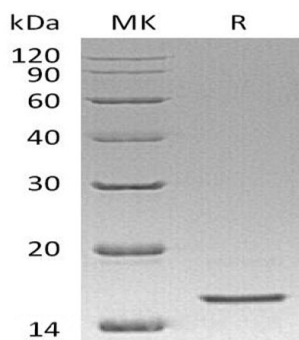
### Description

<b>Species</b>	Human
<b>Source</b>	HEK293 Cells-derived Human REG4;RELP protein Asp23-Pro158, with an C-terminal His
<b>Calculated MW</b>	19.2 kDa
<b>Observed MW</b>	16 kDa
<b>Accession</b>	Q9BYZ8
<b>Bio-activity</b>	Not validated for activity

### Properties

<b>Purity</b>	> 95 % as determined by reducing SDS-PAGE.
<b>Endotoxin</b>	< 1.0 EU per µg of the protein as determined by the LAL method.
<b>Storage</b>	Generally, lyophilized proteins are stable for up to 12 months when stored at -20 to -80°C. Reconstituted protein solution can be stored at 4-8°C for 2-7 days. Aliquots of reconstituted samples are stable at < -20°C for 3 months.
<b>Shipping</b>	This product is provided as lyophilized powder which is shipped with ice packs.
<b>Formulation</b>	Lyophilized from a 0.2 µm filtered solution of 20mM PB, 150mM NaCl, pH 7.2. Normally 5% - 8% trehalose, mannitol and 0.01% Tween 80 are added as protectants before lyophilization.
	Please refer to the specific buffer information in the printed manual.
<b>Reconstitution</b>	Please refer to the printed manual for detailed information.

### Data



> 95 % as determined by reducing SDS-PAGE.

### Background

REG4 is a secreted contains one C-type lectin domain, high expressed in the gastrointestinal tract, including jejunum, ileum, appendix, pancreas and small intestine. REG4 can be up-regulated by mucosal injury from active Crohn's disease or ulcerative colitis. In the acid environment, REG4 can maintain carbohydrate recognition activity. REG4 may be involved in inflammatory and metaplastic response of the gastrointestinal epithelium.

### For Research Use Only

Toll-free: 1-888-852-8623  
Web: [www.elabscience.com](http://www.elabscience.com)

Tel: 1-832-243-6086  
Email: [techsupport@elabscience.com](mailto:techsupport@elabscience.com)

Fax: 1-832-243-6017