

## Recombinant Human GCDH Protein (His Tag)

**Catalog Number:** PKSH032495

**Note:** Centrifuge before opening to ensure complete recovery of vial contents.

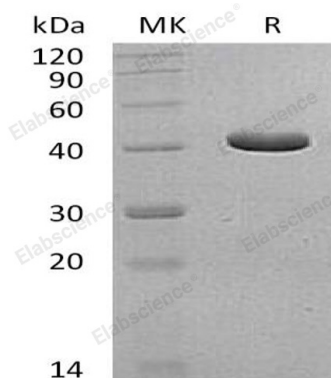
### Description

<b>Species</b>	Human
<b>Source</b>	E.coli-derived Human GCDH protein Arg45-Lys438, with an N-terminal His
<b>Calculated MW</b>	45.0 kDa
<b>Observed MW</b>	41 kDa
<b>Accession</b>	Q92947
<b>Bio-activity</b>	Not validated for activity

### Properties

<b>Purity</b>	> 95 % as determined by reducing SDS-PAGE.
<b>Concentration</b>	Subject to label value.
<b>Endotoxin</b>	< 1.0 EU per µg of the protein as determined by the LAL method.
<b>Storage</b>	Store at < -20°C, stable for 6 months. Please minimize freeze-thaw cycles.
<b>Shipping</b>	This product is provided as liquid. It is shipped at frozen temperature with blue ice/gel packs. Upon receipt, store it immediately at < - 20°C.
<b>Formulation</b>	Supplied as a 0.2 µm filtered solution of 20mM HEPES, 150mM NaCl, pH 7.4.

### Data



> 95 % as determined by reducing SDS-PAGE.

### Background

Glutaryl-CoA Dehydrogenase Mitochondrial (GCDH) is an enzyme that acts upon glutaryl-coenzyme A, creating crotonyl-coenzyme A. It plays a role in the metabolism of lysine, hydroxylysine and tryptophan. It uses electron transfer flavoprotein as its electron acceptor. Isoform Short is inactive Glutaryl-CoA and electron-transfer flavoprotein to (E)-but-2-enoyl-CoA, CO<sub>2</sub> and reduced electron-transfer flavoprotein. A defect in this enzyme is associated with neurological condition glutaric acidemia type 1 and cause a progressive form of early-onset generalized dystonia.

### For Research Use Only

Toll-free: 1-888-852-8623  
Web: [www.elabscience.com](http://www.elabscience.com)

Tel: 1-832-243-6086  
Email: [techsupport@elabscience.com](mailto:techsupport@elabscience.com)

Fax: 1-832-243-6017