

IL13RA2 Polyclonal Antibody

catalog number: E-AB-92149

Note: Centrifuge before opening to ensure complete recovery of vial contents.

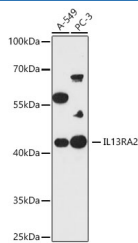
Description

Reactivity	Human;Mouse;Rat
Immunogen	A synthetic peptide of human IL13RA2
Host	Rabbit
Isotype	IgG
Purification	Affinity purification
Buffer	Phosphate buffered solution, pH 7.4, containing 0.05% stabilizer and 50% glycerol.

Applications

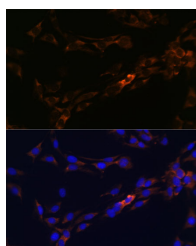
WB	1:500-1:2000
IF	1:50-1:200

Data

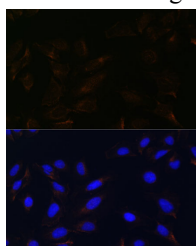


Western blot analysis of extracts of various cell lines using IL13RA2 Polyclonal Antibody at 1:1000 dilution.

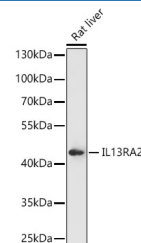
Observed-MW:44 kDa
Calculated-MW:44 kDa



Immunofluorescence analysis of C6 cells using IL13RA2 Polyclonal Antibody at dilution of 1:100. Blue: DAPI for nuclear staining.

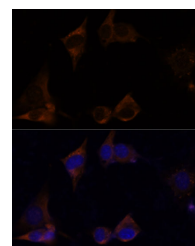


Immunofluorescence analysis of U2OS cells using IL13RA2 Polyclonal Antibody at dilution of 1:100. Blue: DAPI for nuclear staining.



Western blot analysis of extracts of Rat liver using IL13RA2 Polyclonal Antibody at 1:1000 dilution.

Observed-MW:44 kDa
Calculated-MW:44 kDa



Immunofluorescence analysis of NIH/3T3 cells using IL13RA2 Polyclonal Antibody at dilution of 1:100. Blue: DAPI for nuclear staining.

For Research Use Only

Preparation & Storage

Storage

Store at -20°C Valid for 12 months. Avoid freeze / thaw cycles.

Shipping

The product is shipped with ice pack, upon receipt, store it immediately at the temperature recommended.

Background

The protein encoded by this gene is closely related to IL13RA1, a subunit of the interleukin 13 receptor complex. This protein binds IL13 with high affinity, but lacks cytoplasmic domain, and does not appear to function as a signal mediator. It is reported to play a role in the internalization of IL13.

For Research Use Only