

Recombinant Human TMPO Protein (His Tag)

Catalog Number: PKSH033116

Note: *Centrifuge before opening to ensure complete recovery of vial contents.*

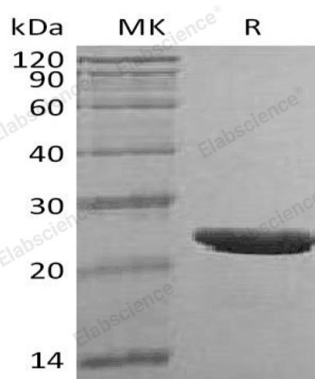
Description

Species	Human
Source	E.coli-derived Human TMPO protein Met1-Glu187, with an C-terminal His
Calculated MW	21.6 kDa
Observed MW	27 kDa
Accession	P42167
Bio-activity	Not validated for activity

Properties

Purity	> 95 % as determined by reducing SDS-PAGE.
Endotoxin	< 1.0 EU per µg of the protein as determined by the LAL method.
Storage	Generally, lyophilized proteins are stable for up to 12 months when stored at -20 to -80°C. Reconstituted protein solution can be stored at 4-8°C for 2-7 days. Aliquots of reconstituted samples are stable at < -20°C for 3 months.
Shipping	This product is provided as lyophilized powder which is shipped with ice packs.
Formulation	Lyophilized from a 0.2 µm filtered solution of PBS, pH 7.4. Normally 5% - 8% trehalose, mannitol and 0.01% Tween 80 are added as protectants before lyophilization.
Reconstitution	Please refer to the specific buffer information in the printed manual. Please refer to the printed manual for detailed information.

Data



> 95 % as determined by reducing SDS-PAGE.

Background

Thymopentin is a member of the LEM family. Thymopentin is expressed in many tissues, highly in the adult thymus and fetal liver. The N-terminal contains two structurally independent domains, LEM domain and LEM-like domain. The C-terminal domain forms a four-stranded coiled coil. Thymopentin may be involved in the structural organization of the nucleus and in the post-mitotic nuclear assembly. It is associated with T-cell development and function. Meantime, Thymopentin plays an important role, together with LMNA, in the nuclear anchorage of RB1. Thymopoietin is participated in the induction of CD90 in the thymus.

For Research Use Only

Toll-free: 1-888-852-8623
Web: www.elabscience.com

Tel: 1-832-243-6086
Email: techsupport@elabscience.com

Fax: 1-832-243-6017