

## Claudin 10 Polyclonal Antibody

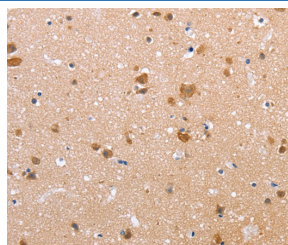
catalog number: E-AB-15679

**Note:** Centrifuge before opening to ensure complete recovery of vial contents.

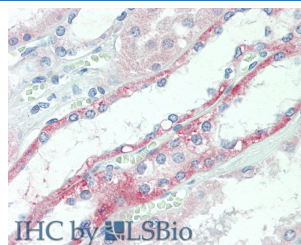
Description	
<b>Reactivity</b>	Human
<b>Immunogen</b>	Synthetic peptide of human CLDN10
<b>Host</b>	Rabbit
<b>Isotype</b>	IgG
<b>Purification</b>	Affinity purification
<b>Conjugation</b>	Unconjugated
<b>Buffer</b>	Phosphate buffered solution, pH 7.4, containing 0.05% stabilizer and 50% glycerol.

Applications	Recommended Dilution
<b>IHC</b>	1:50-1:150

### Data



Immunohistochemistry of paraffin-embedded Human brain tissue using Claudin 10 Polyclonal Antibody at dilution 1:50



Immunohistochemistry of paraffin-embedded Kidney tissue using Claudin 10 Polyclonal Antibody at dilution of 1:60 (Elabscience Product Detected by Lifespan).

Preparation & Storage	
<b>Storage</b>	Store at -20°C Valid for 12 months. Avoid freeze / thaw cycles.
<b>Shipping</b>	The product is shipped with ice pack, upon receipt, store it immediately at the temperature recommended.

### Background

This gene encodes a member of the claudin family. Claudins are integral membrane proteins and components of tight junction strands. Tight junction strands serve as a physical barrier to prevent solutes and water from passing freely through the paracellular space between epithelial or endothelial cell sheets, and also play critical roles in maintaining cell polarity and signal transductions. The expression level of this gene is associated with recurrence of primary hepatocellular carcinoma. Six alternatively spliced transcript variants encoding different isoforms have been reported, but the transcript sequences of some variants are not determined.