

## Recombinant Human ODC1 Protein (His &T7 Tag)

**Catalog Number:** PKSH032837

**Note:** Centrifuge before opening to ensure complete recovery of vial contents.

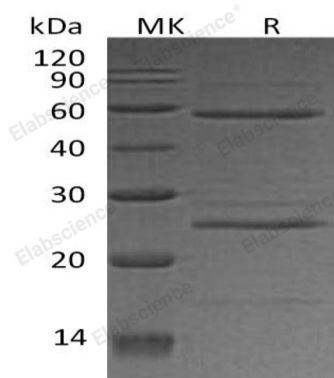
### Description

|                      |  |
|----------------------|--|
| <b>Species</b>       | Human  |
| <b>Source</b>        | E.coli-derived Human ODC1 protein Met 1-Val461, with an N-terminal T7 & C-terminal His |
| <b>Calculated MW</b> | 53.5 kDa   |
| <b>Observed MW</b>   | 25 & 58 kDa  |
| <b>Accession</b>     | P11926   |
| <b>Bio-activity</b>  | Not validated for activity   |

### Properties

|                      |   |
|----------------------|---|
| <b>Purity</b>        | > 90 % as determined by reducing SDS-PAGE.  |
| <b>Concentration</b> | Subject to label value.   |
| <b>Endotoxin</b>     | < 1.0 EU per µg of the protein as determined by the LAL method.   |
| <b>Storage</b>       | Store at < -20°C, stable for 6 months. Please minimize freeze-thaw cycles.  |
| <b>Shipping</b>      | This product is provided as liquid. It is shipped at frozen temperature with blue ice/gel packs. Upon receipt, store it immediately at < -20°C. |
| <b>Formulation</b>   | Supplied as a 0.2 µm filtered solution of 20mM Tris-HCl, 150mM NaCl, pH 8.0.  |

### Data



> 90 % as determined by reducing SDS-PAGE.

### Background

Ornithine decarboxylase (ODC1) is an enzyme which belongs to the Orn/Lys/Arg decarboxylase class-II family. ODC1 is the rate-limiting enzyme of the polyamine biosynthesis pathway which catalyzes ornithine to putrescine. The activity level for the enzyme varies in response to growth-promoting stimuli and exhibits a high turnover rate in comparison to other mammalian proteins.