

## Recombinant Human SULT1A3 Protein (His Tag)

**Catalog Number:** PKSH033370

**Note:** Centrifuge before opening to ensure complete recovery of vial contents.

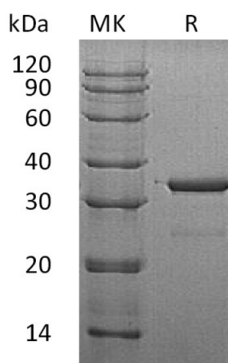
### Description

<b>Species</b>	Human
<b>Source</b>	E.coli-derived Human SULT1A3 protein Met 1-Leu295, with an N-terminal His
<b>Calculated MW</b>	35.6 kDa
<b>Observed MW</b>	35 kDa
<b>Accession</b>	P0DMM9
<b>Bio-activity</b>	Not validated for activity

### Properties

<b>Purity</b>	> 95 % as determined by reducing SDS-PAGE.
<b>Concentration</b>	Subject to label value.
<b>Endotoxin</b>	< 1.0 EU per µg of the protein as determined by the LAL method.
<b>Storage</b>	Store at < -20°C, stable for 6 months. Please minimize freeze-thaw cycles.
<b>Shipping</b>	This product is provided as liquid. It is shipped at frozen temperature with blue ice/gel packs. Upon receipt, store it immediately at < - 20°C.
<b>Formulation</b>	Supplied as a 0.2 µm filtered solution of 20mM Tris-HCl, 6% Sucrose, 4% Mannitol, 0.05% Tween 80, pH 8.5.

### Data



> 95 % as determined by reducing SDS-PAGE.

### Background

Sulfotransferase 1A3/1A4 (SULT1A3) is 295 amino acids in length and localizes to the cytoplasm. It is a member of the Sulfotransferase 1 family. SULT1A3 can be found in the liver, colon, kidney, lung, brain, spleen, small intestine, placenta, and leukocytes. SULT1A3 exists as a homodimer and it catalyzes the sulfation of phenolic monoamines, such as dopamine, norepinephrine and serotonin, and phenolic and catecholic drugs.