

Recombinant Cleaved N-terminal GSDMD Monoclonal Antibody

catalog number: **AN300650L**

Note: Centrifuge before opening to ensure complete recovery of vial contents.

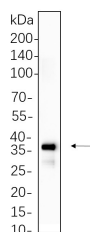
Description

Reactivity	Human;Mouse;Rat
Immunogen	Recombinant Human Cleaved N-terminal GSDMD protein
Host	Rabbit
Isotype	IgG, κ
Clone	8D10
Purification	Protein A
Buffer	PBS, 50% glycerol, 0.05% Proclin 300, 0.05% protein protectant.

Applications Recommended Dilution

WB	1:2000-1:10000
-----------	----------------

Data



Western Blot with Recombinant Cleaved N-terminal GSDMD
Monoclonal Antibody at dilution of 1:1000 dilution. Lane A:
THP-1 cell lysate.

Observed-MW:35 kDa

Calculated-MW:53 kDa

Preparation & Storage

Storage	Store at -20°C Valid for 12 months. Avoid freeze / thaw cycles.
Shipping	Ice bag

Background

GSDMD is a member of the gasdermin family. Members of this family appear to play a role in regulation of epithelial proliferation. GSDMD has been suggested to act as a tumor suppressor. Recently, GSDMD is identified as a new component of inflammasomes, and it is an executor of pyroptosis and required for interleukin-1 β secretion. Cleavage of GSDMD by inflammatory caspases determines pyroptotic cell death.

For Research Use Only