

## RNASEH2C Polyclonal Antibody

catalog number: **E-AB-64851**

**Note:** Centrifuge before opening to ensure complete recovery of vial contents.

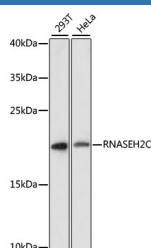
### Description

<b>Reactivity</b>	Human
<b>Immunogen</b>	Recombinant fusion protein of human RNASEH2C (NP_115569.2).
<b>Host</b>	Rabbit
<b>Isotype</b>	IgG
<b>Purification</b>	Affinity purification
<b>Buffer</b>	Phosphate buffered solution, pH 7.4, containing 0.05% stabilizer and 50% glycerol.

### Applications Recommended Dilution

<b>WB</b>	1:500-1:2000
-----------	--------------

### Data



Western blot analysis of extracts of various cell lines using RNASEH2C Polyclonal Antibody at dilution of 1:3000.

**Observed-MW:20 kDa**

**Calculated-MW:17 kDa**

### Preparation & Storage

<b>Storage</b>	Store at -20°C Valid for 12 months. Avoid freeze / thaw cycles.
<b>Shipping</b>	The product is shipped with ice pack, upon receipt, store it immediately at the temperature recommended.

### Background

This gene encodes a ribonuclease H subunit that can cleave ribonucleotides from RNA:DNA duplexes. Mutations in this gene cause Aicardi-Goutieres syndrome-3, a disease that causes severe neurologic dysfunction. A pseudogene for this gene has been identified on chromosome Y, near the sex determining region Y (SRY) gene.

### For Research Use Only