

KLHL41 Polyclonal Antibody

catalog number: **E-AB-91140**

Note: Centrifuge before opening to ensure complete recovery of vial contents.

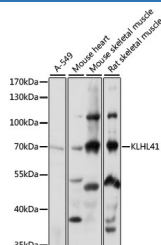
Description

Reactivity	Human;Mouse;Rat
Immunogen	Recombinant fusion protein of human KLHL41
Host	Rabbit
Isotype	IgG
Purification	Affinity purification
Buffer	Phosphate buffered solution, pH 7.4, containing 0.05% stabilizer and 50% glycerol.

Applications

WB	1:200-1:2000
-----------	--------------

Data



Western blot analysis of extracts of various cell lines using
KLHL41 Polyclonal Antibody at 1:1000 dilution.

Observed-MW:68 kDa

Calculated-MW:66 kDa/68 kDa

Preparation & Storage

Storage	Store at -20°C Valid for 12 months. Avoid freeze / thaw cycles.
Shipping	The product is shipped with ice pack, upon receipt, store it immediately at the temperature recommended.

Background

This gene is a member of the kelch-like family. The encoded protein contains a BACK domain, a BTB/POZ domain, and 5 Kelch repeats. This protein is thought to function in skeletal muscle development and maintenance. Mutations in this gene have been associated with nemaline myopathy (NM), a rare congenital muscle disorder.

For Research Use Only