

## Elab Fluor® 700 Anti-Mouse CD45 Antibody[30-F11]

**Catalog Number:** E-AB-F1136UM1

**Note:** Centrifuge before opening to ensure complete recovery of vial contents.

### Description

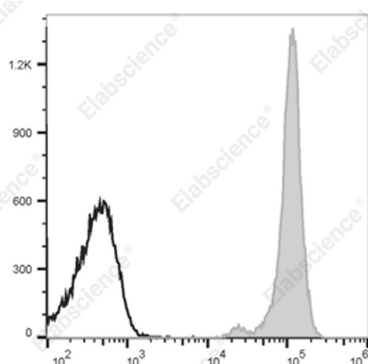
<b>Reactivity</b>	Mouse
<b>Host</b>	Rat
<b>Isotype</b>	Rat IgG2b, $\kappa$
<b>Clone No.</b>	30-F11
<b>Isotype Control</b>	Elab Fluor® 700 Rat IgG2b, $\kappa$ Isotype Control[LTF-2] [Product E-AB-F09843M1]
<b>Conjugation</b>	Elab Fluor® 700
<b>Conjugation Information</b>	Elab Fluor® 700 is designed to be excited by the Red laser (627-640 nm) and detected using an optical filter centered near 719 nm (e.g., a 725/40 nm bandpass filter).
<b>Storage Buffer</b>	Phosphate buffered solution, pH 7.2, containing 0.09% stabilizer and 1% protein protectant.

### Applications

### Recommended usage

<b>FCM</b>	Each lot of this antibody is quality control tested by flow cytometric analysis. Please check your vial before the experiment. Since applications vary, the appropriate dilutions must be determined for individual use. We suggest each investigator should titrate the reagent to obtain optimal results [The recommended concentration is 0.1-1 $\mu\text{g}/10^6$ cells in 100 $\mu\text{L}$ volume].
------------	---

### Data



Staining of C57BL/6 murine splenocytes with Elab Fluor® 700 Anti-Mouse CD45 Antibody[30-F11] (filled gray

histogram) or Elab Fluor® 700 Rat IgG2b,  $\kappa$  Isotype Control (empty black histogram). Total viable cells were used for analysis.

### Preparation & Storage

<b>Storage</b>	Keep as concentrated solution. This product can be stored at 2-8°C for 12 months. Please protected from prolonged exposure to light and do not freeze.
<b>Shipping</b>	Ice bag

### Antigen Information

<b>Alternate Names</b>	CD45;L-CA;Ly-5;Ptpnc;Receptor-type tyrosine-protein phosphatase C;T200
<b>Uniprot ID</b>	P06800

### For Research Use Only

Toll-free: 1-888-852-8623  
Web: [www.elabscience.com](http://www.elabscience.com)

Tel: 1-832-243-6086  
Email: [techsupport@elabscience.com](mailto:techsupport@elabscience.com)

Fax: 1-832-243-6017

Rev. V1.8

**Gene ID**

19264

**Background**

CD45 is a 180-240 kD glycoprotein also known as the leukocyte common antigen (LC A), T200, or Ly-5. It is a member of the protein tyrosine phosphatase (PTP) family, expressed on all hematopoietic cells except mature erythrocytes and platelets. There are different isoforms of CD45 that arise from alternative splicing of exons 4, 5, and 6, which encode A, B, and C determinants, respectively. CD45 plays a key role in TCR and BCR signal transduction. These isoforms are very specific to the activation and maturation state of the cell as well as cell type. The primary ligands for CD45 are galectin-1, CD2, CD3, CD4, TCR, CD22, and Thy-1.