

DEPDC6 Polyclonal Antibody

catalog number: E-AB-67100

Note: Centrifuge before opening to ensure complete recovery of vial contents.

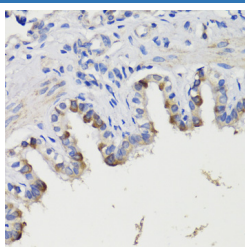
Description

Reactivity	Human;Mouse;Rat
Immunogen	Recombinant fusion protein of human DEPDC6 (NP_073620.2).
Host	Rabbit
Isotype	IgG
Purification	Affinity purification
Buffer	Phosphate buffered solution, pH 7.4, containing 0.05% stabilizer and 50% glycerol.

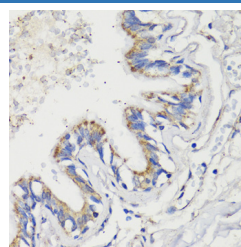
Applications

Applications	Recommended Dilution
IHC	1:50-1:100

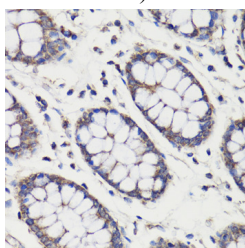
Data



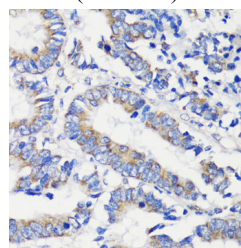
Immunohistochemistry of paraffin-embedded Rat bronchus using DEPDC6 Polyclonal Antibody at dilution of 1:200 (40x lens).



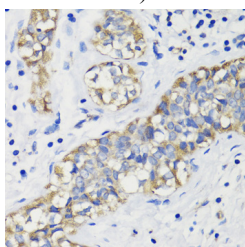
Immunohistochemistry of paraffin-embedded Human lung using DEPDC6 Polyclonal Antibody at dilution of 1:200 (40x lens).



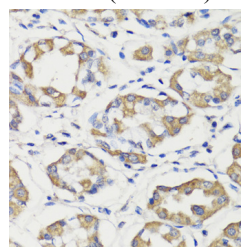
Immunohistochemistry of paraffin-embedded Human colon using DEPDC6 Polyclonal Antibody at dilution of 1:200 (40x lens).



Immunohistochemistry of paraffin-embedded Human colon carcinoma using DEPDC6 Polyclonal Antibody at dilution of 1:200 (40x lens).



Immunohistochemistry of paraffin-embedded Human breast cancer using DEPDC6 Polyclonal Antibody at dilution of 1:200 (40x lens).



Immunohistochemistry of paraffin-embedded Human stomach using DEPDC6 Polyclonal Antibody at dilution of 1:200 (40x lens).

Preparation & Storage

Storage	Store at -20°C Valid for 12 months. Avoid freeze / thaw cycles.
----------------	---

For Research Use Only

Shipping

The product is shipped with ice pack, upon receipt, store it immediately at the temperature recommended.

Background

DEPTOR (DEP Domain Containing MTOR Interacting Protein) is a Protein Coding gene. Diseases associated with DEPTOR include Tuberous Sclerosis 1 and Tuberous Sclerosis 2. Among its related pathways are mTOR signaling pathway (Pathway Interaction Database) and MAPK Signaling: Mitogens. An important paralog of this gene is PREX2.

For Research Use Only