

NLRP7 Polyclonal Antibody

catalog number: E-AB-13071

Note: Centrifuge before opening to ensure complete recovery of vial contents.

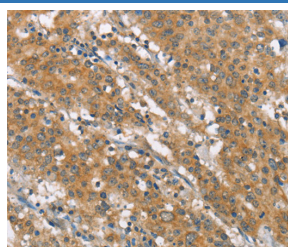
Description

Reactivity	Human
Immunogen	Synthetic peptide of human NLRP7
Host	Rabbit
Isotype	IgG
Purification	Affinity purification
Buffer	Phosphate buffered solution, pH 7.4, containing 0.05% stabilizer and 50% glycerol.

Applications Recommended Dilution

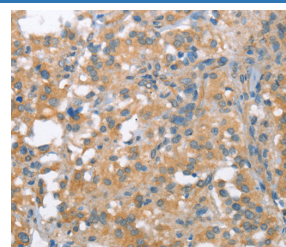
IHC	1:50-1:200
------------	------------

Data



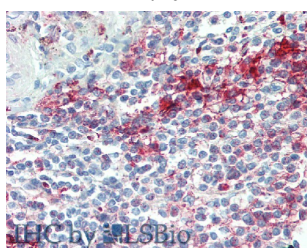
Immunohistochemistry of paraffin-embedded Human gastric cancer tissue using NLRP7 Polyclonal Antibody at dilution

1:40

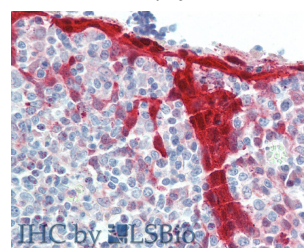


Immunohistochemistry of paraffin-embedded Human thyroid cancer tissue using NLRP7 Polyclonal Antibody at dilution

1:40



Immunohistochemistry of paraffin-embedded Spleen tissue using NLRP7 Polyclonal Antibody at dilution of 1:100(Elabscience Product Detected by Lifespan).



Immunohistochemistry of paraffin-embedded Tonsil tissue using NLRP7 Polyclonal Antibody at dilution of 1:100(Elabscience Product Detected by Lifespan).

Preparation & Storage

Storage	Store at -20°C Valid for 12 months. Avoid freeze / thaw cycles.
Shipping	The product is shipped with ice pack, upon receipt, store it immediately at the temperature recommended.

Background

This gene encodes a member of the NACHT, leucine rich repeat, and PYD containing (NLRP) protein family. It has an N-terminal pyrin domain, followed by a NACHT domain, a NACHT-associated domain (NAD), and a C-terminal leucine-rich repeat (LRR) region. NLRP proteins are implicated in the activation of proinflammatory caspases through multiprotein complexes called inflammasomes. This gene may act as a feedback regulator of caspase-1-dependent interleukin 1-beta secretion. Alternative splicing results in multiple transcript variants encoding different isoforms.

For Research Use Only