

Elab Fluor® 700 Anti-Mouse CD48 Antibody[HM48-1]

Catalog Number: E-AB-F1017M1

Note: Centrifuge before opening to ensure complete recovery of vial contents.

Description

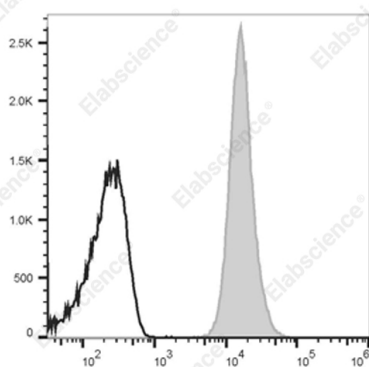
Reactivity	Mouse
Host	Armenian Hamster
Isotype	Armenian Hamster IgG
Clone No.	HM48-1
Isotype Control	Elab Fluor® 700 Armenian Hamster IgG Isotype Control[PIP] [Product E-AB-F09852M1]
Conjugation	Elab Fluor® 700
Conjugation Information	Elab Fluor® 700 is designed to be excited by the Red laser (627-640 nm) and detected using an optical filter centered near 719 nm (e.g., a 725/40 nm bandpass filter).
Storage Buffer	Phosphate buffered solution, pH 7.2, containing 0.09% sodium azide and 1% BSA.

Applications

Recommended usage

FCM Each lot of this antibody is quality control tested by flow cytometric analysis. **The amount of the reagent is suggested to be used 5 µL of antibody per test (million cells in 100 µL staining volume or per 100 µL of whole blood).** Please check your vial before the experiment. Since applications vary, the appropriate dilutions must be determined for individual use.

Data



Staining of C57BL/6 murine splenocytes with Elab Fluor® 700 Anti-Mouse CD48 Antibody[HM48-1] (filled gray

histogram) or Elab Fluor® 700 Armenian Hamster IgG Isotype Control (empty black histogram). Total viable cells were used for analysis.

Preparation & Storage

Storage	Keep as concentrated solution. This product can be stored at 2-8°C for 12 months. Please protected from prolonged exposure to light and do not freeze.
Shipping	Ice bag

Antigen Information

Alternate Names	CD48 antigen;Cd48;BCM1 surface antigen;BLAST-1;HM48-1;MRC OX-45 surface antigen;SLAMF2;sgp-60;CD48;
Uniprot ID	P18181

For Research Use Only

Gene ID

12506

Background

CD48 is a 45 kD GPI-anchored glycoprotein also known as BCM1, Blast-1 (human), and OX-45 (rat). It is a member of the Ig superfamily, expressed on T and B cells and monocytes/macrophages. It plays a role in adhesion and T cell recognition. The primary ligands for CD48 are CD2 and CD244.