

## SDHC Polyclonal Antibody

catalog number: **E-AB-92324**

**Note:** Centrifuge before opening to ensure complete recovery of vial contents.

### Description

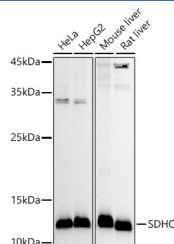
<b>Reactivity</b>	Human;Mouse;Rat
<b>Immunogen</b>	A synthetic peptide of human SDHC
<b>Host</b>	Rabbit
<b>Isotype</b>	IgG
<b>Purification</b>	Affinity purification
<b>Buffer</b>	Phosphate buffered solution, pH 7.4, containing 0.05% stabilizer and 50% glycerol.

### Applications

### Recommended Dilution

<b>WB</b>	1:500-1:2000
<b>IHC</b>	1:50-1:200
<b>IF</b>	1:50-1:200

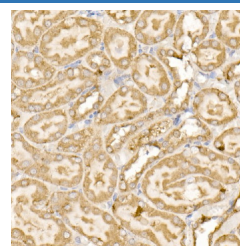
### Data



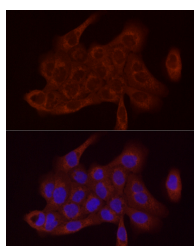
Western blot analysis of extracts of various cell lines using SDHC Polyclonal Antibody at 1:1000 dilution.

**Observed-MW:12 kDa**

**Calculated-MW:12 kDa/14 kDa/16 kDa/18 kDa**

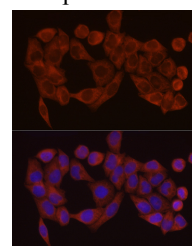
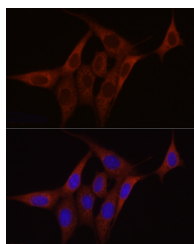


Immunohistochemistry of paraffin-embedded rat kidney using SDHC Polyclonal Antibody at dilution of 1:100 (40x lens). Perform high pressure antigen retrieval with 10 mM citrate buffer pH 6.0 before commencing with IHC staining protocol.



Immunofluorescence analysis of A-431 cells using SDHC Polyclonal Antibody at dilution of 1:100 (40x lens). Blue:

DAPI for nuclear staining.



Immunofluorescence analysis of HeLa cells using SDHC Polyclonal Antibody at dilution of 1:100 (40x lens). Blue:

DAPI for nuclear staining.

### For Research Use Only

Immunofluorescence analysis of NIH/3T3 cells using SDHC

Polyclonal Antibody at dilution of 1:100 (40x lens). Blue:

DAPI for nuclear staining.

## Preparation & Storage

**Storage**

Store at -20°C Valid for 12 months. Avoid freeze / thaw cycles.

**Shipping**

The product is shipped with ice pack, upon receipt, store it immediately at the temperature recommended.

## Background

This gene encodes one of four nuclear-encoded subunits that comprise succinate dehydrogenase, also known as mitochondrial complex II, a key enzyme complex of the tricarboxylic acid cycle and aerobic respiratory chains of mitochondria. The encoded protein is one of two integral membrane proteins that anchor other subunits of the complex, which form the catalytic core, to the inner mitochondrial membrane. There are several related pseudogenes for this gene on different chromosomes. Mutations in this gene have been associated with paragangliomas. Alternatively spliced transcript variants have been described.

## For Research Use Only